

November-December-January 2021/22
Seasonal Climate Outlook





SEYCHELLES METEOROLOGICAL AUTHORITY

November-December-January 2021/22 Seasonal



Table of Contents

1. August-September-October 2021 Performance	1
2. September-October-November 2021 Performance.....	1
3. Oceanic Patterns 2021	2
4. November-December-January Rainfall Seasonal Forecast 2021.....	3



SEYCHELLES METEOROLOGICAL AUTHORITY

November-December-January 2021/22 Seasonal



1. August-September-October 2021 Performance

Table 1 below shows that the rainfall recorded during the August-September-October (ASO) season was Below Normal over most stations except for Cascade, Fairview and Tea Factory which recorded Normal rainfall. However, all stations recorded negative anomalies.

Table 1: August-September-October Rainfall Performance

	ASO TOTAL	ASO LONG TERM MEAN	BN	AN	BN?	AN?	ANOMALIES
AnseBoileau	355.3	484.4	363.3	605.5	YES	NO	-129.1
Anse-Forbans	212	416.8	312.6	521.0	YES	NO	-204.8
Anse-Royale-Waterwork-PUC	231.8	478.1	358.5	597.6	YES	NO	-246.3
Belombre	420.8	585.4	439.1	731.8	YES	NO	-164.6
CascadeWaterworkPUC	480.8	593.0	444.8	741.3	NO	NO	-112.2
FairviewLaMisere	493.1	624.8	468.6	781.0	NO	NO	-131.7
Hermitage-Waterwork-PUC	343	476.1	357.1	595.2	YES	NO	-133.1
La-Gogue-Waterwork-PUC	218.9	379.9	284.9	474.9	YES	NO	-161.0
Le-Niol-Waterwork-PUC	419.6	617.7	463.3	772.2	YES	NO	-198.1
Praslin-Airstrip-(Amitie)	278.2	421.3	316.0	526.6	YES	NO	-143.1
Quatre-Bornes-Police-Station	163.7	384.6	288.5	480.8	YES	NO	-220.9
Rochon-Waterwork-PUC	436.4	585.9	439.4	732.3	YES	NO	-149.5
Seychelles-International-Airport	323.6	455.3	341.4	569.1	YES	NO	-131.7
Tea-Factory-Morne-Blanc	423.8	533.2	399.9	666.5	NO	NO	-109.4

2. September-October-November 2021 Performance

Table 2 below shows how the September-October-November season is performing so far, two months into the season. All stations considered for seasonal forecasting recorded Below-Normal rainfall with some significant negative anomalies. Given the current situation, it is very likely that the entire season (September-October-November) will receive be Below Normal rainfall.

Table 2: September-October rainfall performance

	SEPT TOTAL	OCT TOTAL	SEPT + OCT TOTAL	SON LONG TERM MEAN	ANOMALIES
Anse-Boileau	218.7	49.1	267.8	589.0	-321.2
Anse-Forbans	147.5	35.1	182.6	518.6	-336.0
Anse-Royale-Waterwork-PUC	136.3	46.9	183.2	597.2	-414.0
Belombre	306.4	56.1	362.5	652.2	-289.7
Cascade-Waterwork-PUC	314.2	118.3	432.5	700.4	-267.9
Fairview-La-Misere	309.1	131.8	440.9	732.1	-291.2
Hermitage-Waterwork-PUC	228.3	79.2	307.5	599.6	-292.1
La-Gogue-Waterwork-PUC	139.8	54.6	194.4	478.8	-284.4
Le-Niol-Waterwork-PUC	282.7	67.4	350.1	702.7	-352.6
Praslin-Airstrip	185.7	64.7	250.4	474.4	-224.0
Quatre-Bornes-Police-Station	100.6	30.8	131.4	462.4	-331.0
Rochon-Waterwork-PUC	282.3	112.3	394.6	695.0	-300.4
Seychelles-International-Airport	207.8	92.0	299.8	559.0	-259.2
Tea-Factory-Morne-Blanc	237.7	125.8	363.5	651.0	-287.5

3. Oceanic Patterns 2021

Sea surface temperature continues to cool in the tropical Pacific Ocean, resulting in changes in cloud and wind pattern in the atmosphere. Once the positive feedback loop between the ocean and the atmosphere is established, this will help sustain the La Nina condition for a prolonged period of time. All climate models indicate further cooling of the tropical Pacific Ocean sea surface temperature in the coming months. La Nina threshold is expected to be met in December and January resulting in reduced rainfall over the Seychelles. Meanwhile, the Indian Ocean Dipole is neutral and it is expected to remain neutral in the coming months ahead.

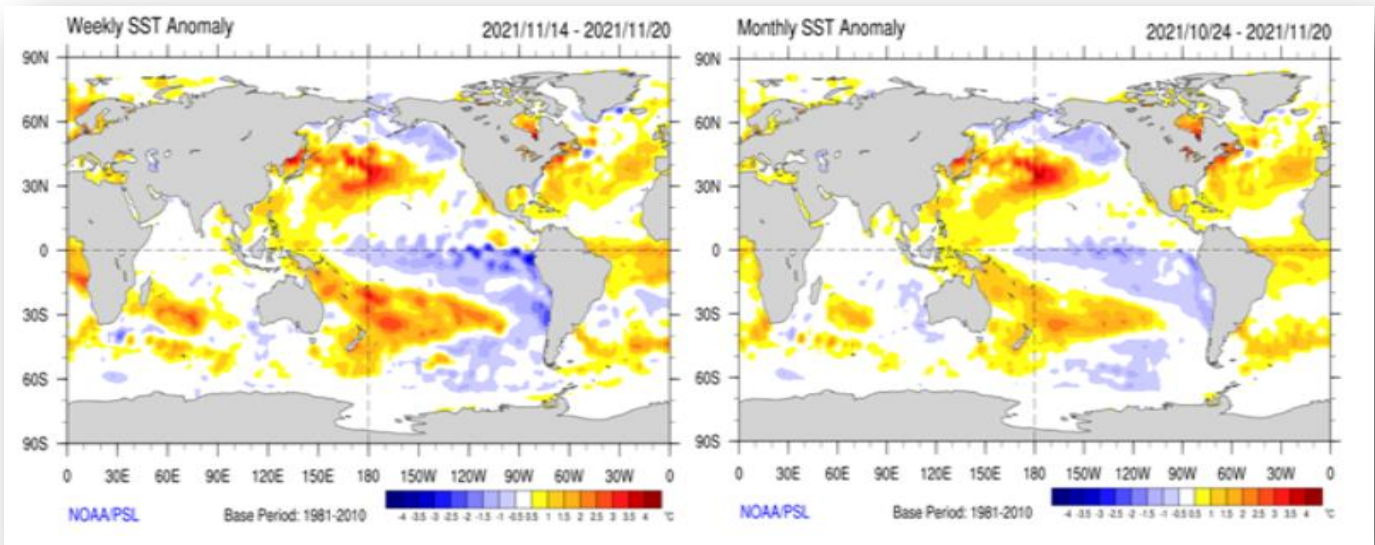


Figure 1: Current weekly SST Anomalies (Left) and Current monthly SST Anomalies (Right)

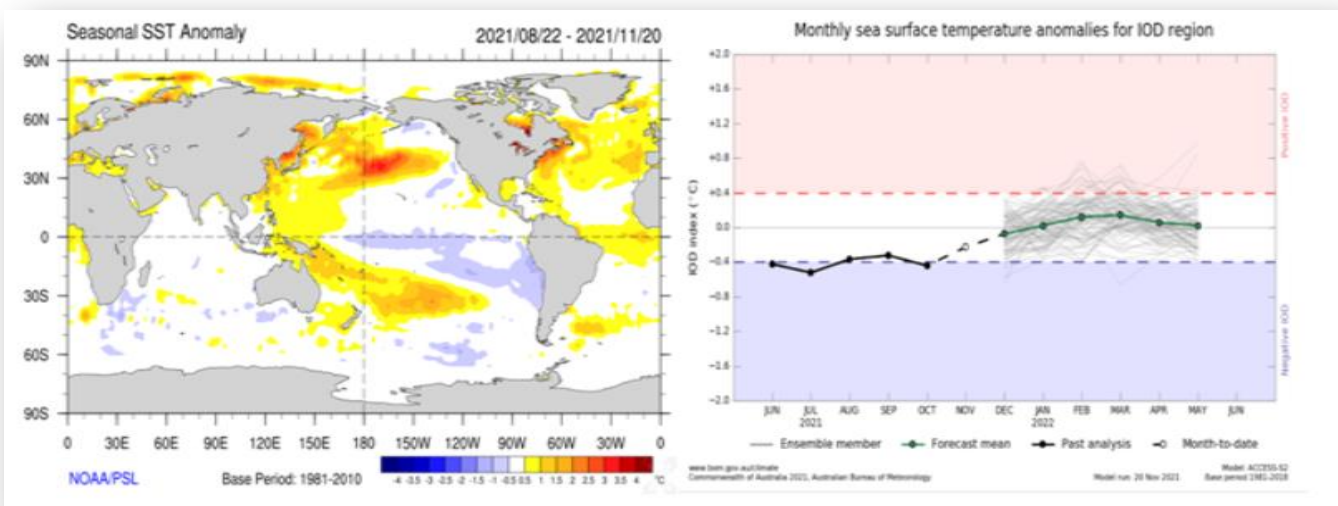


Figure 2: Current Seasonal SST Anomalies (Left) and The Indian Ocean Dipole index (Right)

4. November-December-January Rainfall Seasonal Forecast 2021

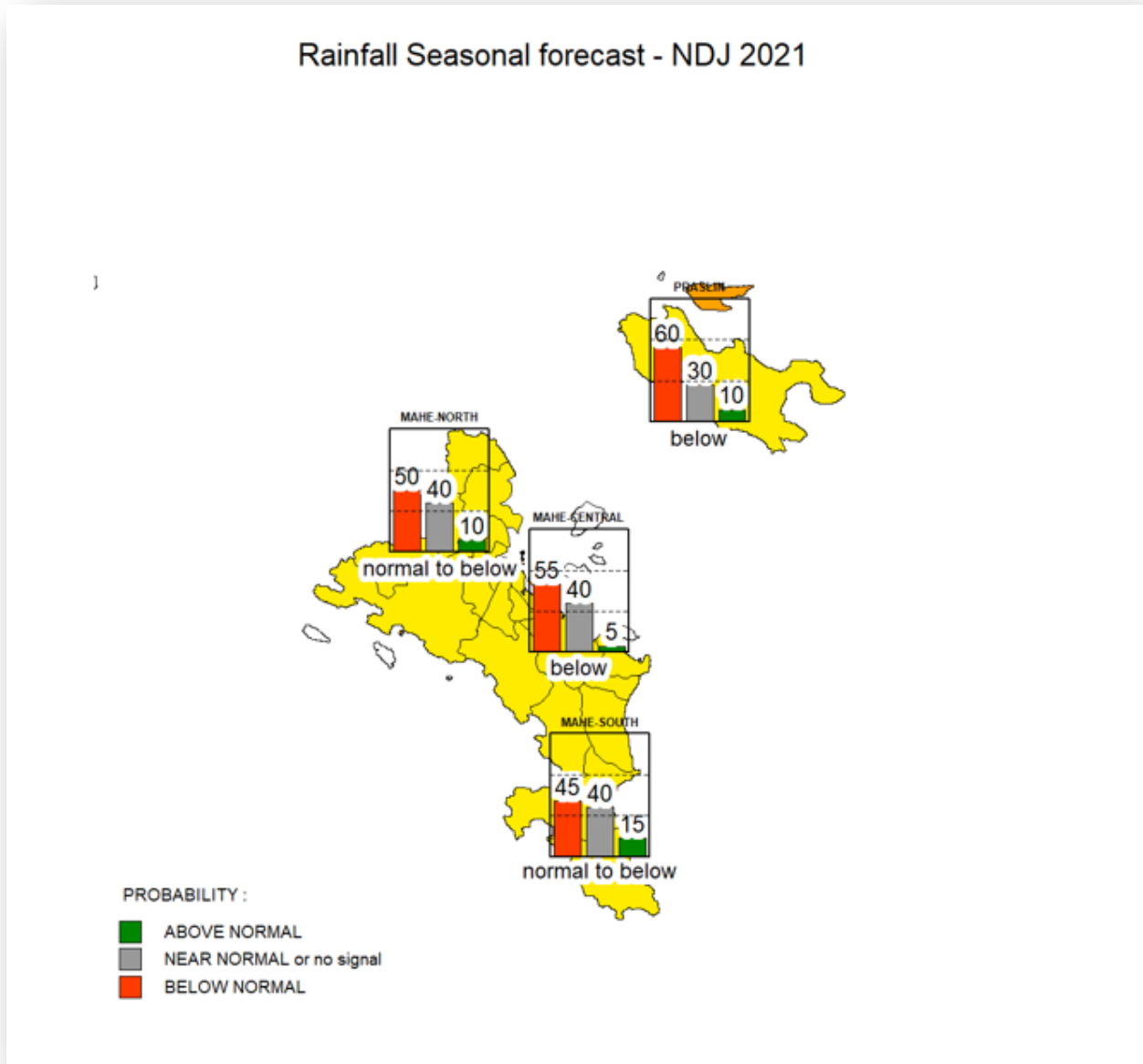


Figure 3: November-December-January Rainfall Seasonal Forecast 2021

Based on the prevailing conditions, the probability-based rainfall outlook for November-December-January indicates an enhanced likelihood for Normal to Below Normal Rainfall over Mahe, Praslin, and La Digue.