

## **August 2021 Weather Review**





# SEYCHELLES METEOROLOGICAL AUTHORITY

## September 2021 Climate and Weather Bulletin



### Table of Contents

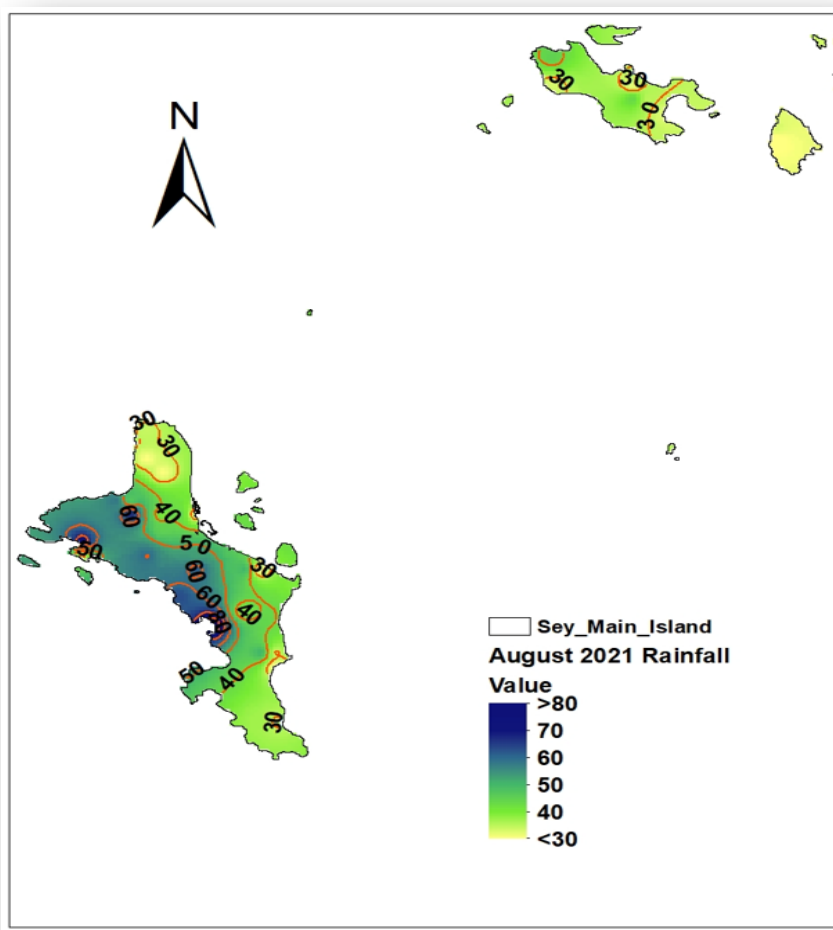
1. Introduction.....	1
2. Rainfall Performance in August 2021 .....	1
2.1 Spatial Rainfall Distribution for August 2021.....	1
2.2 August Rainfall Totals Compared to Long-Term Mean .....	2
2.3 Percentage of Mean Rainfall for August 2021.....	3
3. Daily Weather for August 2021 at the Seychelles International Airport.....	5
3.1 Daily rainfall, relative humidity, maximum, and minimum temperatures in August 2021 .....	5
3.2 Daily solar Radiation, Sunshine hours, Mean Sea Level Pressure, and Surface wind speeds in August 2021 .....	6
4. Wind Patterns in August 2021 .....	7

## 1. Introduction

This bulletin reviews climate conditions over Mahe, Praslin, and La Digue and highlights the status of the climate systems during the month of August 2021. Throughout the month, the Near Equatorial Trough axis remained more active to the north of Mahe as the mascarene high to the south intensified resulting in a reduction in rainfall over Mahe and the inner islands.

## 2. Rainfall Performance in August 2021

### 2.1 Spatial Rainfall Distribution for August 2021



The spatial rainfall distribution for August (Figure 1) shows that most of the rainfall fell over the western side of Mahe, where all stations recorded rainfall amounts exceeding 50 mm. A maximum of 87.5 mm was recorded at the Anse Boileau station. On the other hand, Praslin, La Digue, the southern, eastern, and northern tip of Mahe recorded less than 30 mm of Rainfall. Meanwhile, the minimum was recorded on La Digue at the Belvue station. Overall the month of August was relatively dry.

*Figure 1: August 2021 Spatial Rainfall Distribution*

Comparing the rainfall recorded at the 38 stations to their respective long-term mean during August (Figure 2) shows drier than normal conditions over all stations.

The recorded amounts only represented between 20-73% of the normal rainfall for August (Figure 3). The western side and some areas in the north of Mahe island recorded rainfall amounts representing between 40-73% compared to other areas which experienced much drier conditions. The significant reduction in rainfall meant that all the 38 stations experienced Below Normal conditions (Table 1) with significant negative anomalies.

### 2.2 August Rainfall Totals Compared to Long-Term Mean

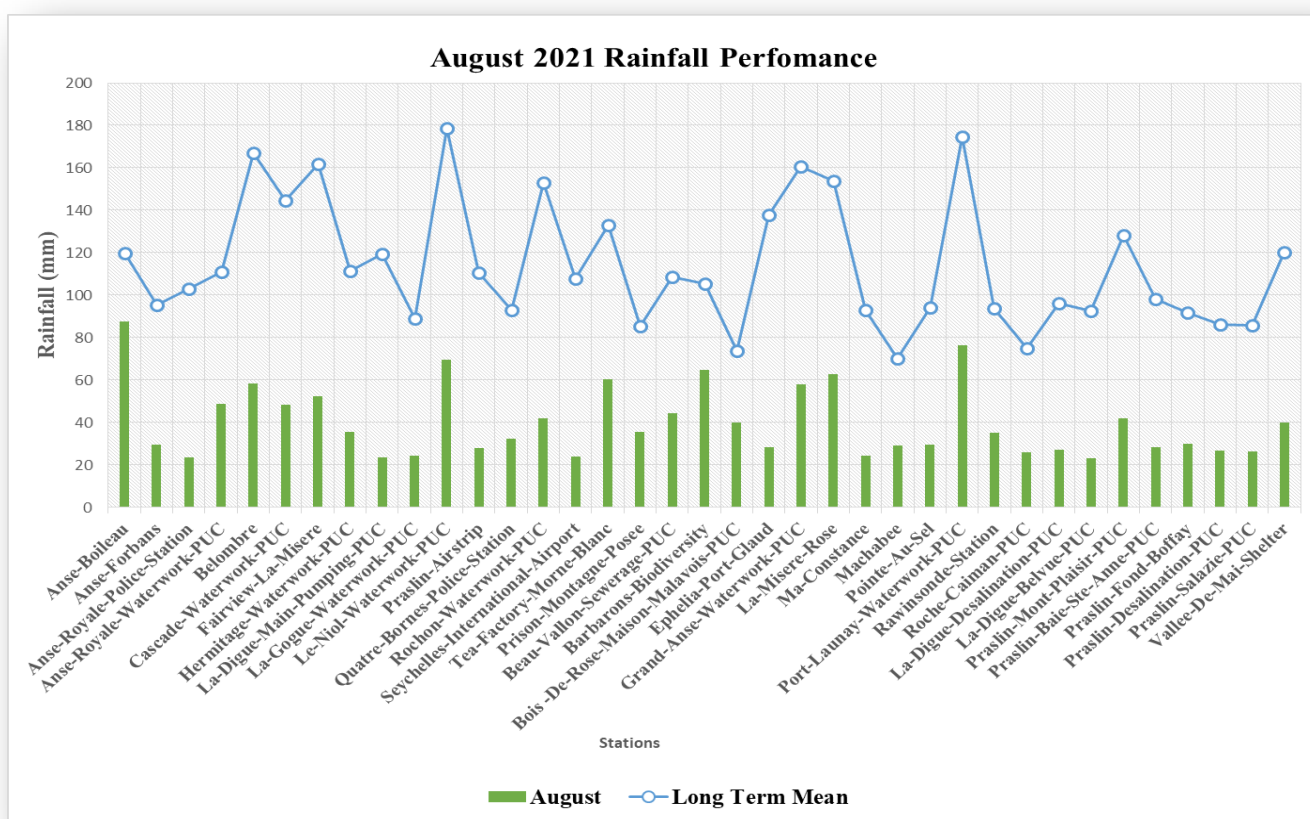
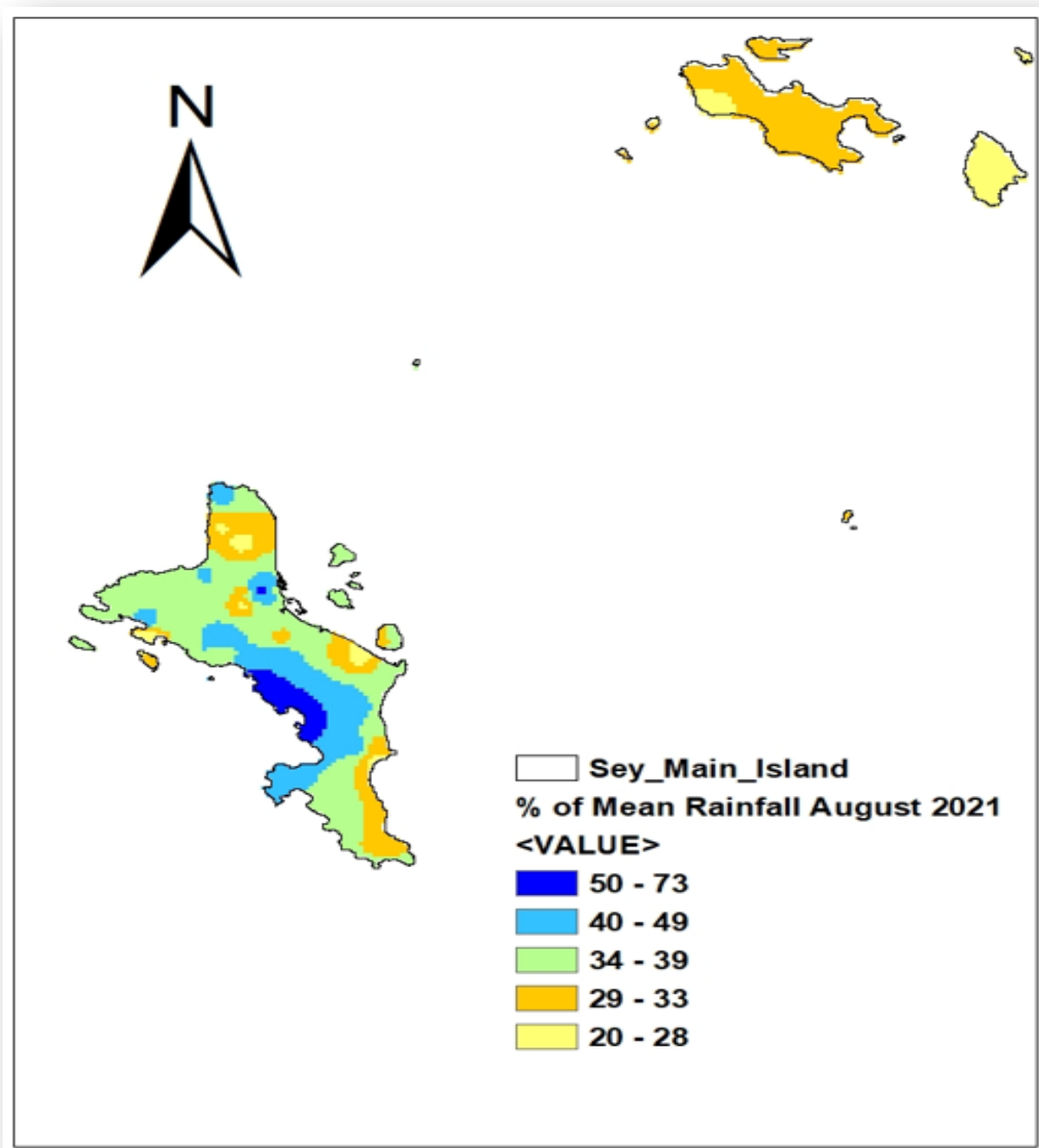


Figure 2: August 2021 Rainfall totals compared to the long-term mean

## 2.3 Percentage of Mean Rainfall for August 2021



*Figure 3: Percentage of mean Rainfall for August 2021*





# SEYCHELLES METEOROLOGICAL AUTHORITY

## September 2021 Climate and Weather Bulletin

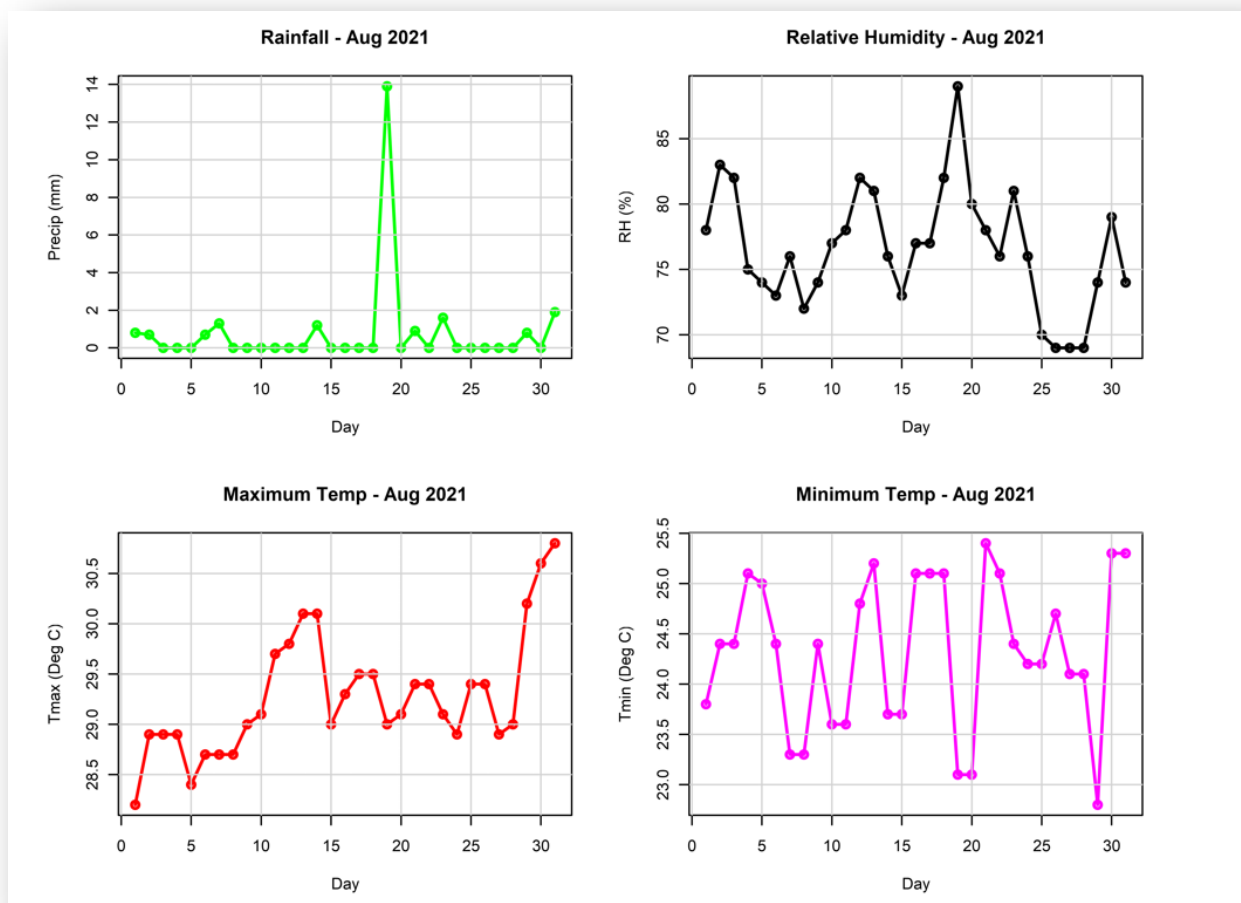


*Table 1: Rainfall performance in August*

Stations	August	Long Term Mean	BN	AN	BN?	AN?	Anomalies
Anse-Boileau	87.5	119.7	89.775	149.625	YES	NO	-32.2
Anse-Forbans	29.4	95.5	71.625	119.375	YES	NO	-66.1
Anse-Royale-Police-Station	23.6	103	77.25	128.75	YES	NO	-79.4
Anse-Royale-Waterwork-PUC	48.6	110.9	83.175	138.625	YES	NO	-62.3
Belombre	58.3	167	125.25	208.75	YES	NO	-108.7
Cascade-Waterwork-PUC	48.3	144.6	108.45	180.75	YES	NO	-96.3
Fairview-La-Misere	52.2	161.8	121.35	202.25	YES	NO	-109.6
Hermitage-Waterwork-PUC	35.5	111.5	83.625	139.375	YES	NO	-76.0
La-Digue-Main-Pumping-PUC	23.4	119.2	89.4	149	YES	NO	-95.8
La-Gogue-Waterwork-PUC	24.5	88.8	66.6	111	YES	NO	-64.3
Le-Niol-Waterwork-PUC	69.5	178.6	133.95	223.25	YES	NO	-109.1
Praslin-Airstrip	27.8	110.4	82.8	138	YES	NO	-82.6
Quatre-Bornes-Police-Station	32.3	92.9	69.675	116.125	YES	NO	-60.6
Rochon-Waterwork-PUC	41.8	153	114.75	191.25	YES	NO	-111.2
Seychelles-International-Airport	23.8	107.9	80.925	134.875	YES	NO	-84.1
Tea-Factory-Morne-Blanc	60.3	132.8	99.6	166	YES	NO	-72.5
Prison-Montagne-Posee	35.4	85.2	63.9	106.5	YES	NO	-49.8
Beau-Vallon-Sewerage-PUC	44.2	108.4	81.3	135.5	YES	NO	-64.2
Barbarons-Biodiversity	64.8	105.4	79.05	131.75	YES	NO	-40.6
Bois -De-Rose-Maison-Malavois-P	39.9	73.6	55.2	92	YES	NO	-33.7
Ephelia-Port-Glaud	28.4	137.7	103.275	172.125	YES	NO	-109.3
Grand-Anse-Waterwork-PUC	58	160.6	120.45	200.75	YES	NO	-102.6
La-Misere-Rose	62.7	153.8	115.35	192.25	YES	NO	-91.1
Ma-Constance	24.4	92.8	69.6	116	YES	NO	-68.4
Machabee	29	70.2	52.65	87.75	YES	NO	-41.2
Pointe-Au-Sel	29.5	94.2	70.65	117.75	YES	NO	-64.7
Port-Launay-Waterwork-PUC	76.5	174.4	130.8	218	YES	NO	-97.9
Rawinsonde-Station	35.3	93.9	70.425	117.375	YES	NO	-58.6
Roche-Caiman-PUC	26	75	56.25	93.75	YES	NO	-49.0
La-Digue-Desalination-PUC	27.3	96.2	72.15	120.25	YES	NO	-68.9
La-Digue-Belvue-PUC	23.2	92.4	69.3	115.5	YES	NO	-69.2
Praslin-Mont-Plaisir-PUC	42.1	128.2	96.15	160.25	YES	NO	-86.1
Praslin-Baie-Ste-Anne-PUC	28.3	98.1	73.575	122.625	YES	NO	-69.8
Praslin-Fond-Boffay	30.1	91.6	68.7	114.5	YES	NO	-61.5
Praslin-Desalination-PUC	26.7	86	64.5	107.5	YES	NO	-59.3
Praslin-Salazie-PUC	26.5	85.8	64.35	107.25	YES	NO	-59.3
Vallee-De-Mai-Shelter	40	120.1	90.075	150.125	YES	NO	-80.1
Vallee-De-Mai-Viewing-Lodge	47	126.1	94.575	157.625	YES	NO	-79.1

### 3. Daily Weather for August 2021 at the Seychelles International Airport

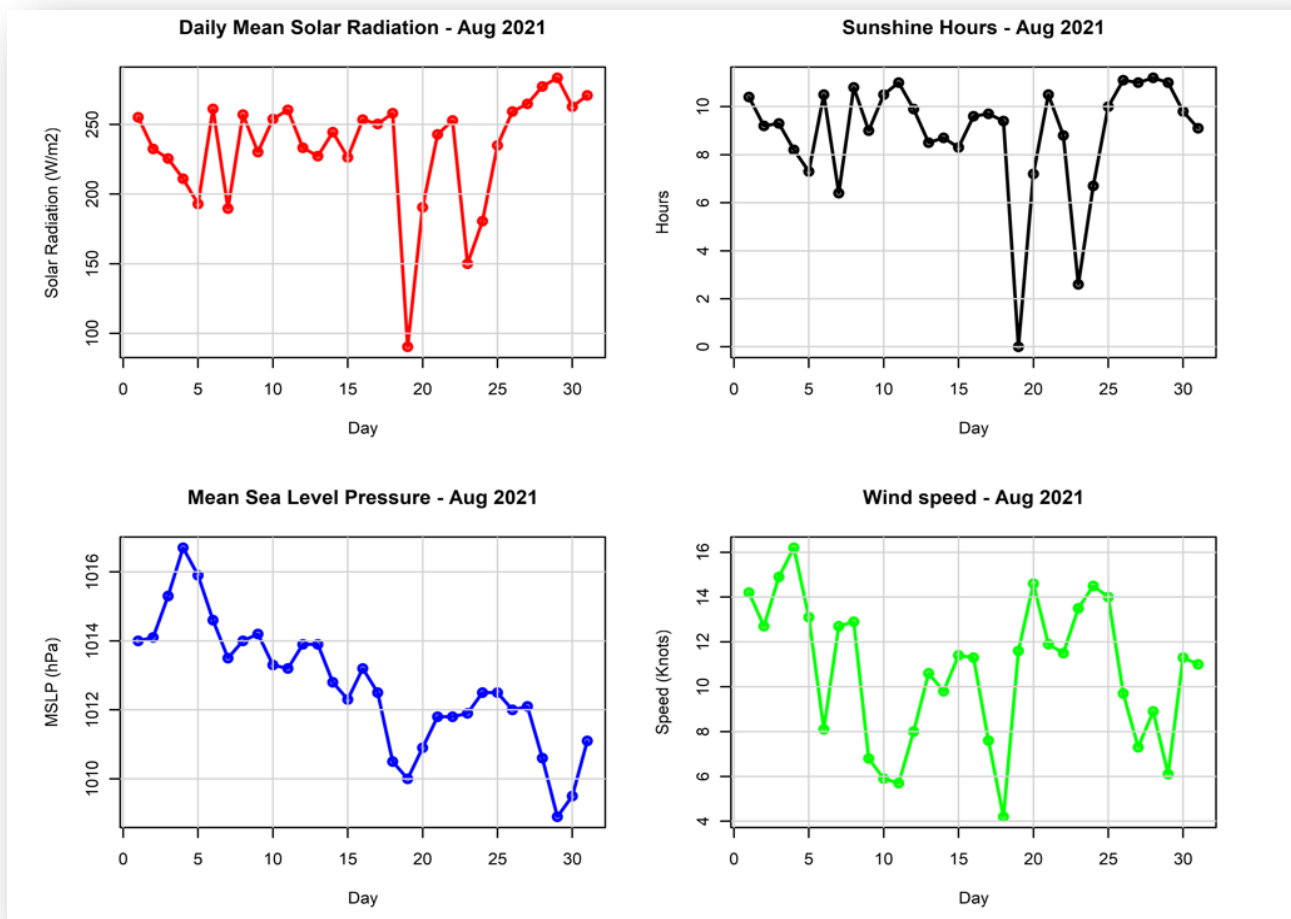
#### 3.1 Daily rainfall, relative humidity, maximum, and minimum temperatures in August 2021



*Figure 4: Daily rainfall, relative humidity, maximum and minimum temperatures in August 2021*

The highest daily rainfall recorded at the Airport Station was 13.9 mm on the 19<sup>th</sup>, with 10 dry days during the month. The Average Relative Humidity was 77%. However, a relatively low value of 69% was recorded over 3 days between the 26<sup>th</sup> and 28<sup>th</sup> August. The daily maximum temperature generally remained above 28.0°C for the entire month, with the highest at 30.8°C reported on the 31<sup>st</sup>. The minimum temperature remained slightly below 25.5°C with the lowest of 22.8°C reported on 29<sup>th</sup>, whereas the highest of 25.4°C was reported on 21<sup>st</sup>.

### 3.2 Daily solar Radiation, Sunshine hours, Mean Sea Level Pressure, and Surface wind speeds in August 2021

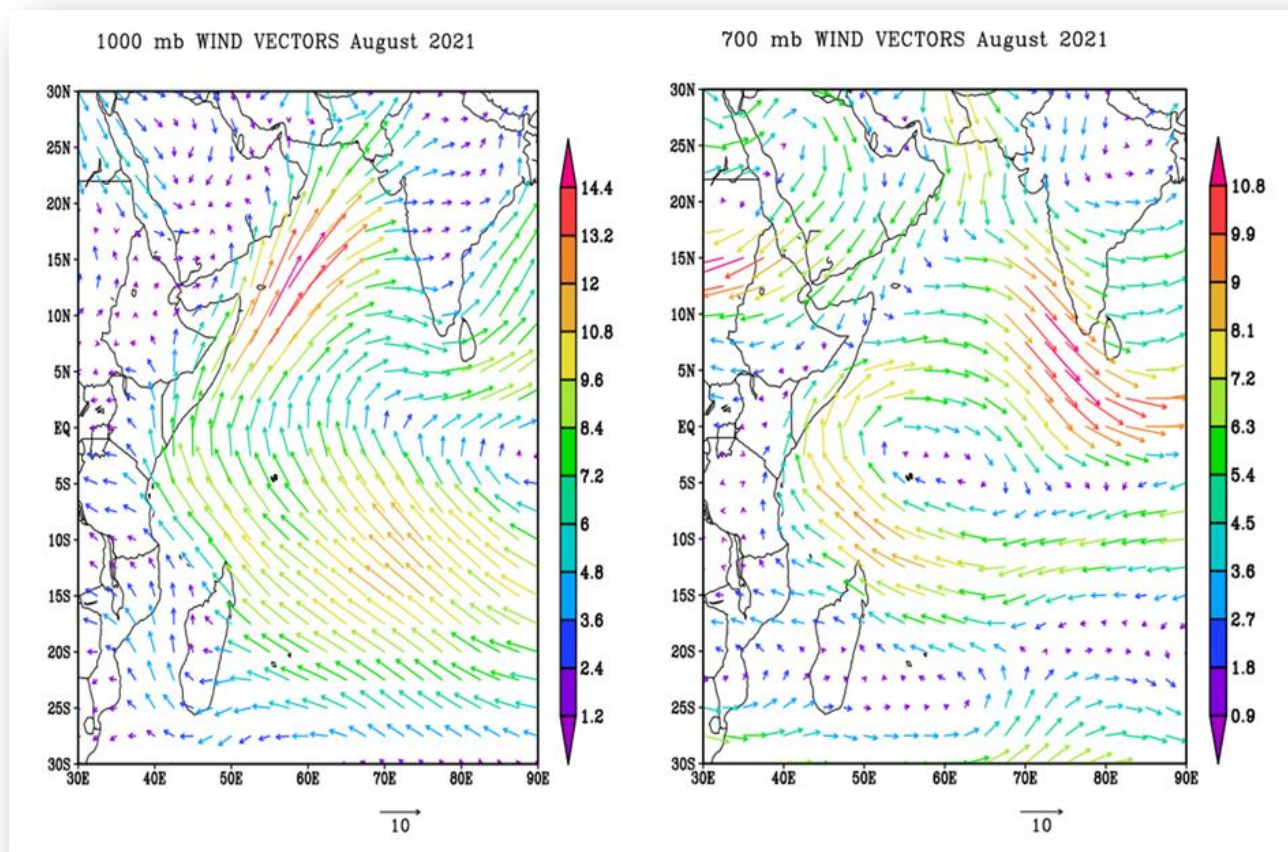


*Figure 5: Daily solar Radiation, Sunshine hours, Mean Sea Level Pressure, and Surface wind speeds in August 2021*

The average mean daily solar radiation during August was 233 W/m<sup>2</sup>, with a maximum of 283.4 W/m<sup>2</sup> recorded on the 29<sup>th</sup> and a minimum of 90.4 on the 19<sup>th</sup>. The diurnal variation of the mean solar radiation closely matched the sunshine hours. The wind remained fairly strong, with wind strength ranging between 4.2-16.2 Knots. The mean sea level pressure showed a negative trend with a range of 1008.9-1016.7hPa (Figure 5).



## 4. Wind Patterns in August 2021



*Figure 6: Surface wind flow (left) and wind flow at 700mb (right)*

The analysis (Figure 6) shows a trans-equatorial flow of moderate South-easterlies at the surface and the Near Equatorial trough axis maintaining its position slightly to the North. At the medium level, a reduction in wind strength can be seen over the area of interest with a low-pressure circulation visible between latitudes 40°-70°.