

August-September-October 2021 Seasonal Climate Outlook





SEYCHELLES METEOROLOGICAL AUTHORITY
August-September-October 2021 Seasonal Climate Outlook



Table of Contents

- 1. May-June-July 2021 Performance..... 1**
- 2. June-July_August 2021 Performance 1**
- 3. Oceanic Patterns 2021 2**
- 4. August-September-October Rainfall Seasonal Forecast 2021 4**



SEYCHELLES METEOROLOGICAL AUTHORITY

August-September-October 2021 Seasonal Climate Outlook



1. May-June-July 2021 Performance

Table 1 below shows that the rainfall recorded during the May-June-July (MJJ) season was mostly Near-Normal.

Table 1: May-June-July Rainfall Performance

	MJJ TOTAL	MJJ LONG TERM MEAN	BN	AN	BN?	AN?	ANOMALIES
Anse-Boileau	748.1	477.3	358.0	596.6	NO	YES	270.8
Anse-Forbans	463.5	414.8	311.1	518.5	NO	NO	48.7
Anse-Royale-Police-Station	317.0	428.6	321.4	535.7	YES	NO	-111.6
Anse-Royale-Waterwork-PUC	388.0	488.5	366.4	610.6	NO	NO	-100.5
Belombre	733.7	573.2	429.9	716.5	NO	YES	160.5
Cascade-Waterwork-PUC	518.6	562.9	422.2	703.6	NO	NO	-44.3
Fairview-La-Misere	561.2	630.7	473.0	788.4	NO	NO	-69.5
Hermitage-Waterwork-PUC	478.8	510.4	382.8	638.0	NO	NO	-31.6
La-Gogue-Waterwork-PUC	361.0	399.8	299.9	499.8	NO	NO	-38.8
Le-Niol-Waterwork-PUC	681.5	638.1	478.6	797.6	NO	NO	43.4
Praslin-Airstrip	413.9	372.3	279.2	465.3	NO	NO	41.6
Quatre-Bornes-Police-Station	412.8	354.8	266.1	443.5	NO	NO	58.0
Rochon-Waterwork-PUC	614.0	607.1	455.4	758.9	NO	NO	6.9
Seychelles-International-Airport	410.7	460.6	345.4	575.7	NO	NO	-49.9
Tea-Factory-Morne-Blanc	608.7	668.8	501.6	836.1	NO	NO	-60.1

2. June-July-August 2021 Performance

Table 2 below shows how the June-July-August season is performing so far, two months into the season. All stations considered for seasonal forecasting recorded below-Normal rainfall with some significant negative anomalies.

Table 2: June-July-August rainfall performance

	JUN TOTAL	JUL TOTAL	JUN + JUL TOTAL	JJA LONG TERM MEAN	ANOMALIES
Anse-Boileau	140.4	89.9	230.3	475.0	-244.7
Anse-Forbans	45.1	51.5	96.6	410.0	-313.4
Anse-Royale-Police-Station	22.8	20.8	43.6	424.6	-381.0
Anse-Royale-Waterwork-PUC	45.5	53.3	98.8	484.5	-385.7
Belombre	115.5	266.3	381.8	573.6	-191.8
Cascade-Waterwork-PUC	82.2	115.1	197.3	559.1	-361.8
Fairview-La-Misere	92.8	128.4	221.2	624.1	-402.9
Hermitage-Waterwork-PUC	58.7	85.7	144.4	509.3	-364.9
La-Gogue-Waterwork-PUC	29.8	32.5	62.3	398.7	-336.4
Le-Niol-Waterwork-PUC	116.7	226.2	342.9	634.7	-291.8
Praslin-Airstrip	45.1	138.2	183.3	371.5	-188.2
Quatre-Bornes-Police-Station	73.0	42.2	115.2	351.0	-235.8
Rochon-Waterwork-PUC	87.3	142.9	230.2	604.6	-374.4
Seychelles-International-Airport	44.4	53.0	97.4	455.5	-358.1
Tea-Factory-Morne-Blanc	95.0	164.3	259.3	663.6	-404.3

3. Oceanic Patterns 2021

The El Niño–Southern Oscillation (ENSO) remains neutral, with most oceanic and atmospheric indicators within the neutral range. Most climate model outlooks indicate that the central tropical Pacific Ocean is likely to cool over the coming months but remain ENSO-neutral. Some models showing this cooling will be enough to reach the La Niña thresholds by late September, while others stay neutral. This cooling may contribute to the outlook for Normal to below-median rainfall for Seychelles in the coming months, along with the negative IOD. Both weekly and Monthly sea surface temperatures (SSTs) in the Indian Ocean were warmer than average across much of the eastern half of the Basin, but have weakened compared to past weeks. SSTs around the Horn of Africa and the Arabian Peninsula are mainly close to average, although small areas of cool anomalies persist close to the coastline (Figure 2).

The seasonal sea surface temperature anomalies indicate some reduced warming to the eastern side of the Basin. However, some small areas of cooling are seen within the channel area and extending to the South. According to most surveyed climate models, a negative Indian Ocean Dipole (IOD) is underway and may persist until at least October (Figure 2).

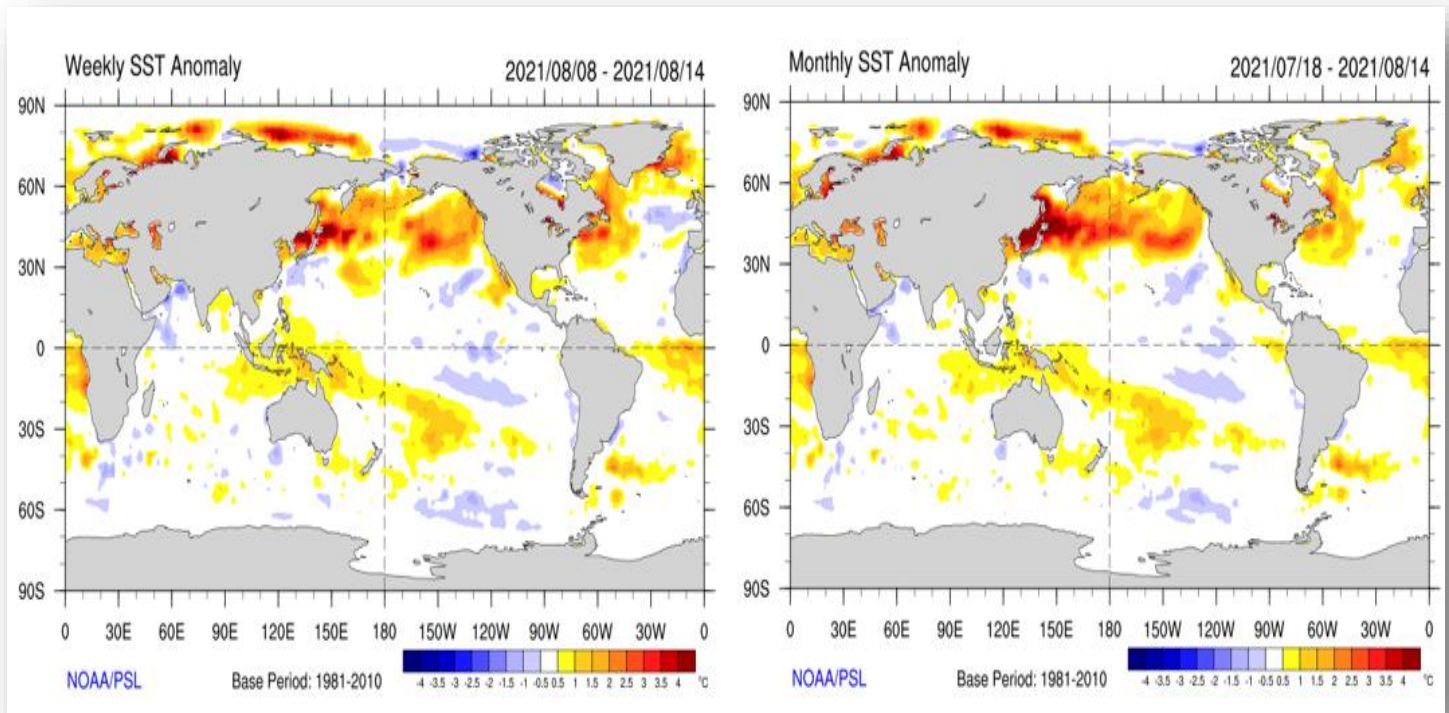


Figure 1: Current weekly SST Anomalies (Left) and Current monthly SST Anomalies (Right)

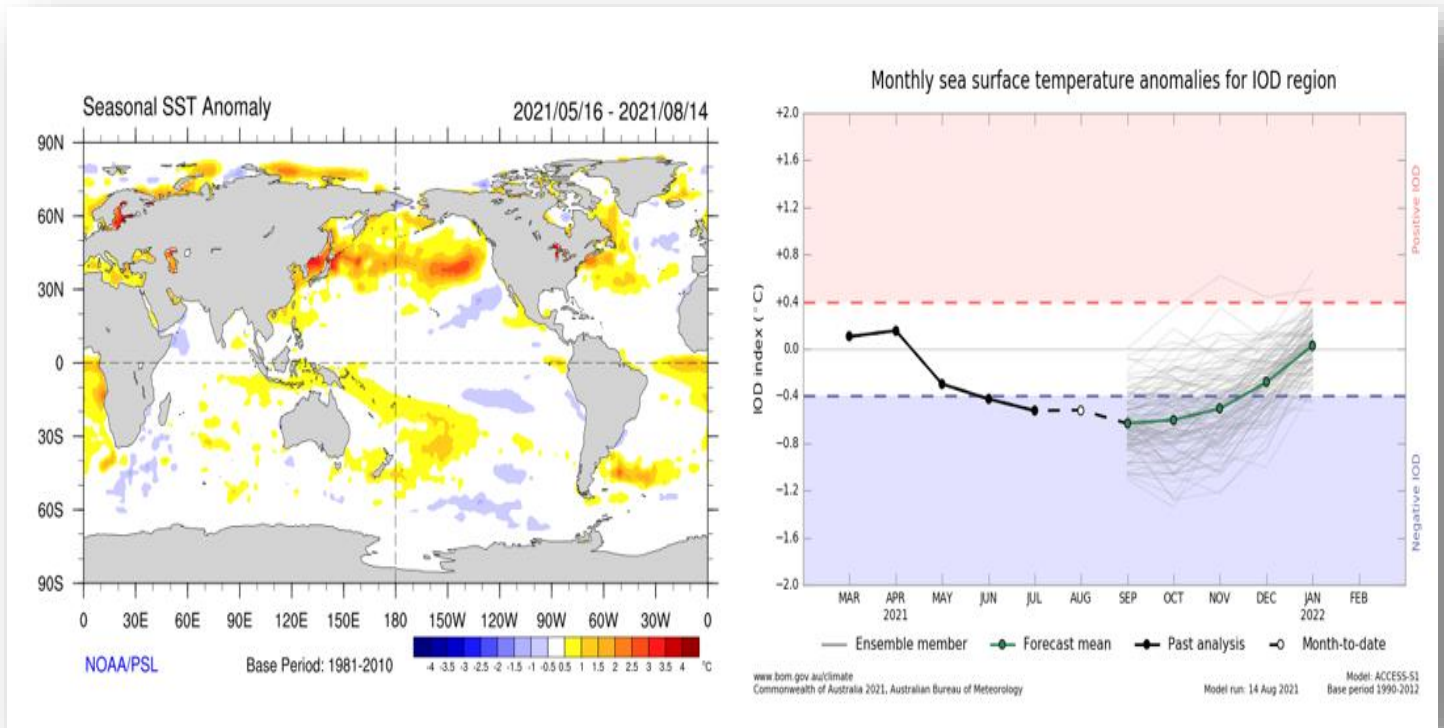


Figure 2: Current Seasonal SST Anomalies (Left) and The Indian Ocean Dipole index (Right)

4. August-September-October Rainfall Seasonal Forecast 2021

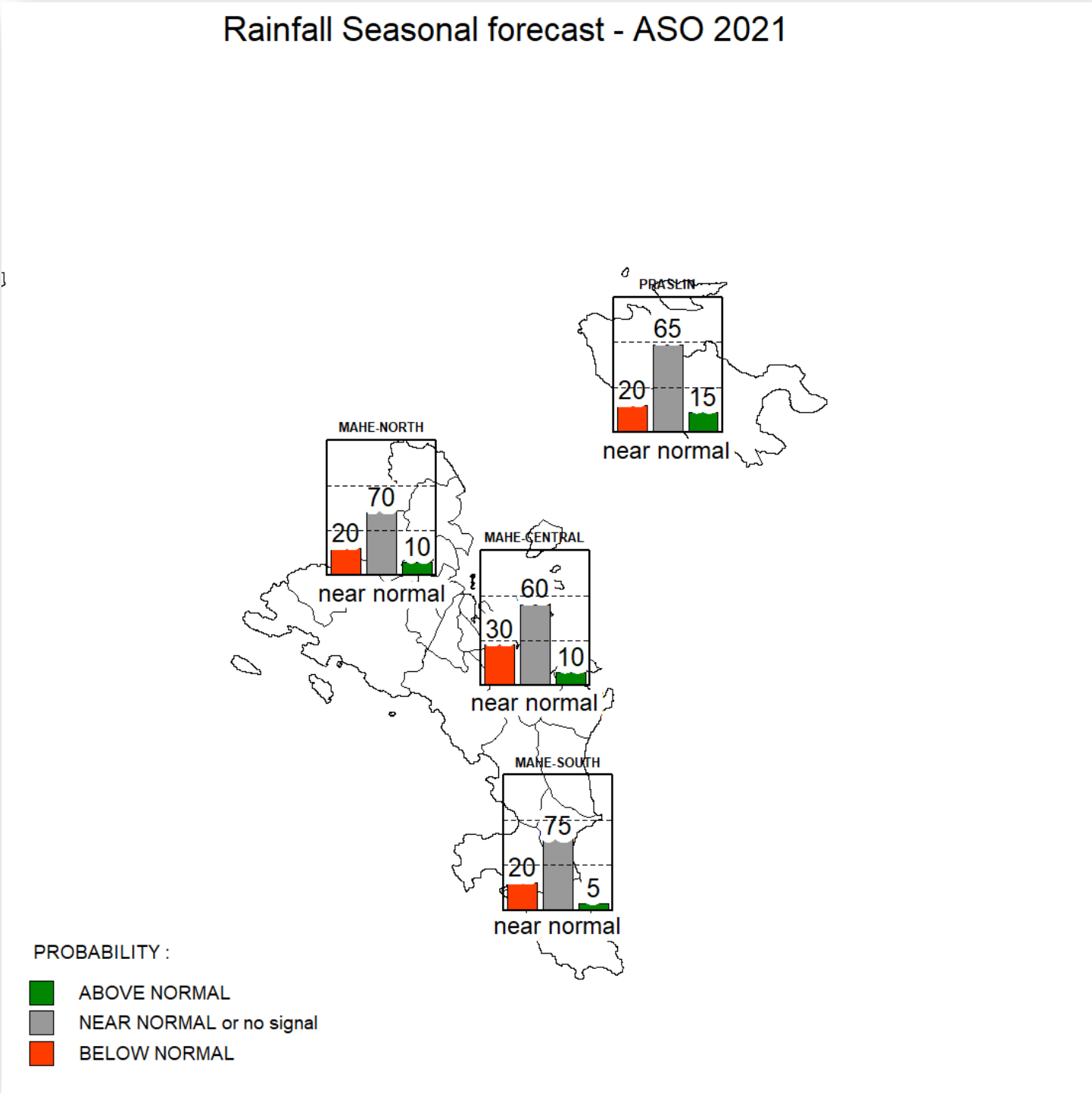


Figure 3: June-July-August Rainfall Seasonal Forecast 2021



SEYCHELLES METEOROLOGICAL AUTHORITY

August-September-October 2021 Seasonal Climate Outlook



Based on the prevailing conditions over the South-west Indian Ocean, the probability-based rainfall outlook for August-September-October indicates an enhanced likelihood for Near-Normal Rainfall with a strong bias towards Below-Normal over Mahe and Inner Islands.