

June 2021 Weather Review





SEYCHELLES METEOROLOGICAL AUTHORITY

July 2021 Climate and Weather Bulletin



Table of Contents

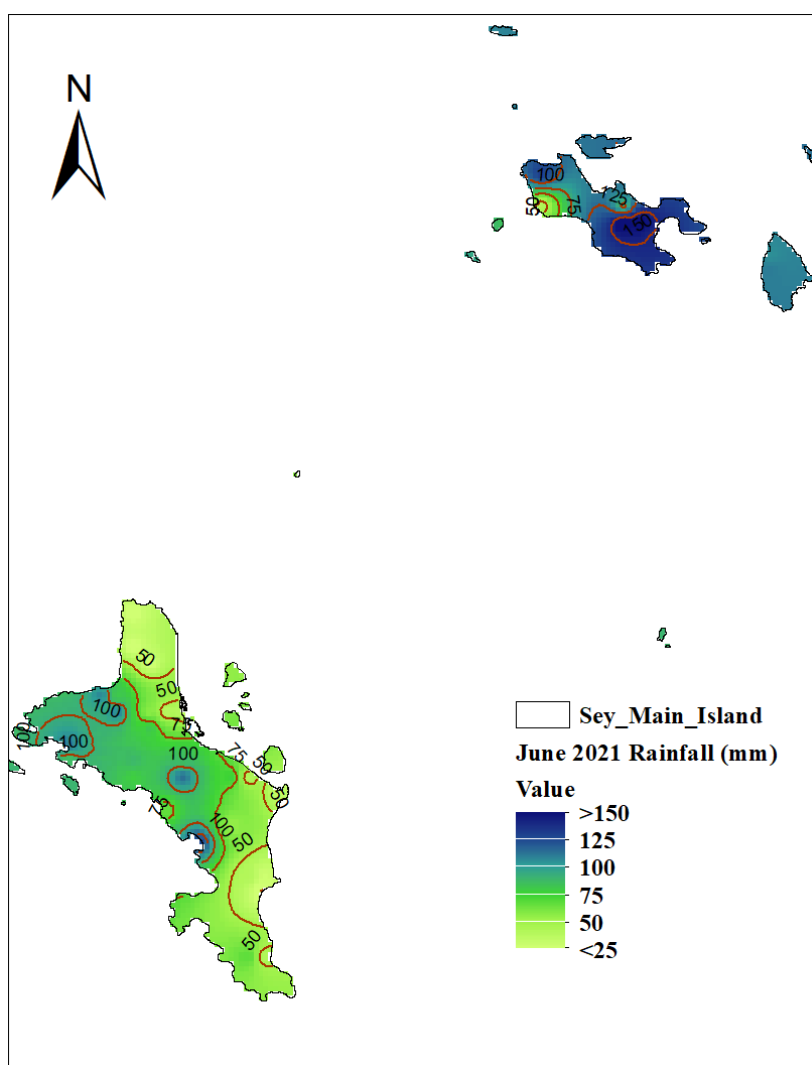
1. Introduction.....	1
2. Rainfall Performance in June 2021	1
2.1 Spatial Rainfall Distribution for June 2021.....	1
2.2 June Rainfall Totals Compared to Long-Term Mean	2
2.3 Percentage of Mean Rainfall for June 2021.....	3
3. Daily Weather for June 2021 at the Seychelles International Airport.....	5
3.1 Daily rainfall, relative humidity, maximum, and minimum temperatures in June 2021	5
3.2 Daily solar Radiation, Sunshine hours, Mean Sea Level Pressure, and Surface wind speeds in June 2021.....	6
4. Wind Patterns in June 2021	7

1. Introduction

This bulletin reviews climate conditions over Mahe, Praslin, and La Digue and highlights the status of the climate systems during the month of June 2021. June was a generally dry month, the trough axis remained active slightly to the North. Increased atmospheric instability was over the eastern part of the Indian Ocean basin hence reducing precipitation activities especially over Mahe.

2. Rainfall Performance in June 2021

2.1 Spatial Rainfall Distribution for June 2021



The spatial rainfall distribution for June (Figure 1) indicates that most stations recorded less than 150 mm of rainfall, with only stations to the Eastern Praslin that reported rainfall exceeding 150mm. The highest rainfall amounting to 187.1 mm was recorded at the Vallee De Mai Viewing Lodge station in Praslin. Over Mahe, a maximum of 140.4 mm was recorded at Anse Boileau station and, in La-Digue Belvue PUC recorded a maximum of 133.2mm. The minimum rainfall amount of 22.8 was reported at Anse-Royale-Police-Station.

Figure 1: June 2021 Spatial Rainfall Distribution

Comparing the rainfall recorded at the 38 stations to their respective long-term mean during June (Figure 2) shows relatively drier than average conditions. However, 14 stations got more than their monthly mean rainfall for June. The reduction in rainfall amounts in June was attributed to the shift of the trough axis to the North due to the intensification of the Mascarene high and active eastern side of the Indian Ocean basin. 6 stations all from Praslin, surpassed their long-term means by over 140% (Figure 3).

Table 1 summarizes June's rainfall performance. Out of the 38 stations, 24 recorded Below Normal rainfall with relatively high negative anomalies. 8 stations recorded Near-Normal and 6 Above-Normal (Table 1). Therefore, it was clear that overall the month of June got Below-Normal rainfall.

2.2 June Rainfall Totals Compared to Long-Term Mean

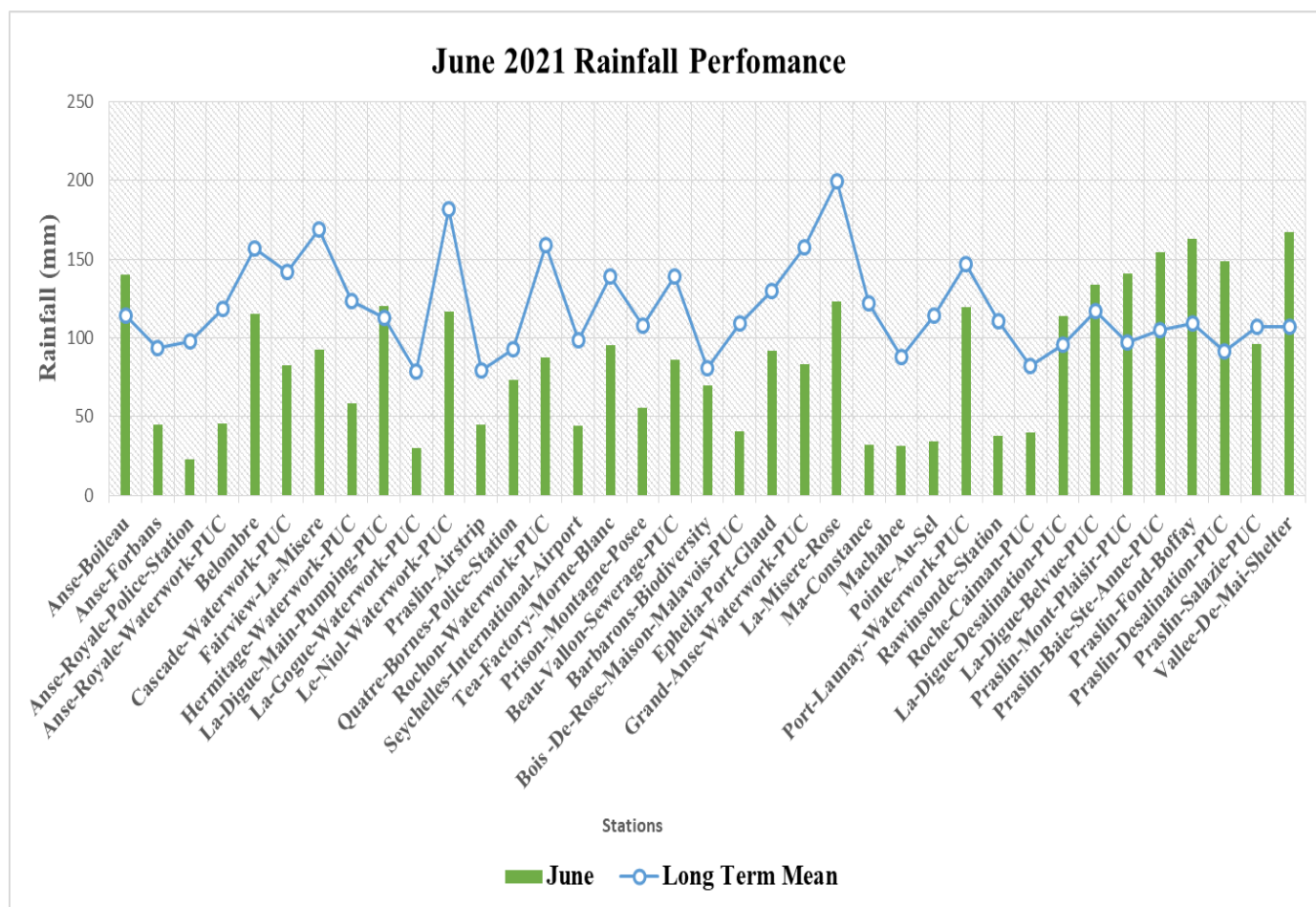


Figure 2: June 2021 rainfall totals compared to the long-term mean

2.3 Percentage of Mean Rainfall for June 2021

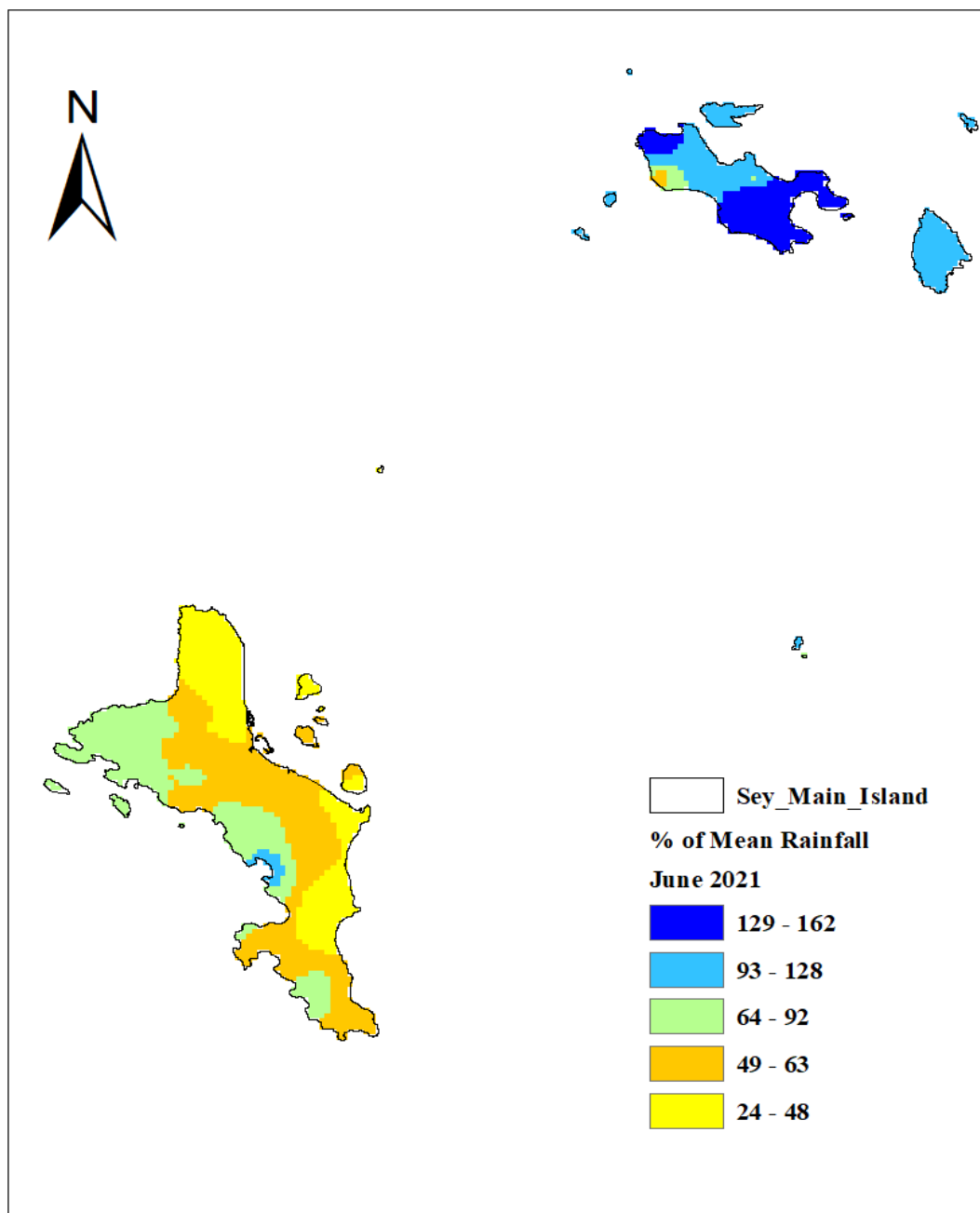


Figure 3: Percentage of mean Rainfall for June 2021



SEYCHELLES METEOROLOGICAL AUTHORITY

July 2021 Climate and Weather Bulletin



Table 1: Rainfall performance in June

Stations	June	Long Term Mean	BN	AN	BN?	AN?	Anomalies
Anse-Boileau	140.4	113.9	85.425	142.375	NO	NO	26.5
Anse-Forbans	45.1	93.8	70.35	117.25	YES	NO	-48.7
Anse-Royale-Police-Station	22.8	97.7	73.275	122.125	YES	NO	-74.9
Anse-Royale-Waterwork-PUC	45.5	118.7	89.025	148.375	YES	NO	-73.2
Belombre	115.5	157	117.75	196.25	YES	NO	-41.5
Cascade-Waterwork-PUC	82.2	141.7	106.275	177.125	YES	NO	-59.5
Fairview-La-Misere	92.8	168.6	126.45	210.75	YES	NO	-75.8
Hermitage-Waterwork-PUC	58.7	123.2	92.4	154	YES	NO	-64.5
La-Digue-Main-Pumping-PUC	120	112.7	84.525	140.875	NO	NO	7.3
La-Gogue-Waterwork-PUC	29.8	78.6	58.95	98.25	YES	NO	-48.8
Le-Niol-Waterwork-PUC	116.7	181.6	136.2	227	YES	NO	-64.9
Praslin-Airstrip	45.1	79.4	59.55	99.25	YES	NO	-34.3
Quatre-Bornes-Police-Station	73	92.6	69.45	115.75	NO	NO	-19.6
Rochon-Waterwork-PUC	87.3	158.7	119.025	198.375	YES	NO	-71.4
Seychelles-International-Airport	44.4	98.7	74.025	123.375	YES	NO	-54.3
Tea-Factory-Morne-Blanc	95	138.7	104.025	173.375	YES	NO	-43.7
Prison-Montagne-Posee	55.5	107.6	80.7	134.5	YES	NO	-52.1
Beau-Vallon-Sewerage-PUC	85.9	139.3	104.475	174.125	YES	NO	-53.4
Barbarons-Biodiversity	69.9	81	60.75	101.25	NO	NO	-11.1
Bois -De-Rose-Maison-Malavois-PUC	40.8	109.3	81.975	136.625	YES	NO	-68.5
Ephelia-Port-Glaud	91.9	129.6	97.2	162	YES	NO	-37.7
Grand-Anse-Waterwork-PUC	83.6	157.2	117.9	196.5	YES	NO	-73.6
La-Misere-Rose	123.2	199.3	149.475	249.125	YES	NO	-76.1
Ma-Constance	31.9	121.9	91.425	152.375	YES	NO	-90.0
Machabee	31.7	88.1	66.075	110.125	YES	NO	-56.4
Pointe-Au-Sel	34	114.5	85.875	143.125	YES	NO	-80.5
Port-Launay-Waterwork-PUC	119.8	147	110.25	183.75	NO	NO	-27.2
Rawinsonde-Station	37.9	110.8	83.1	138.5	YES	NO	-72.9
Roche-Caiman-PUC	40.1	82.2	61.65	102.75	YES	NO	-42.1
La-Digue-Desalination-PUC	113.5	96	72	120	NO	NO	17.5
La-Digue-Belvue-PUC	133.8	116.9	87.675	146.125	NO	NO	16.9
Praslin-Mont-Plaisir-PUC	141	97.4	73.05	121.75	NO	YES	43.6
Praslin-Baie-Ste-Anne-PUC	154.3	105.1	78.825	131.375	NO	YES	49.2
Praslin-Fond-Boffay	162.9	109.4	82.05	136.75	NO	YES	53.5
Praslin-Desalination-PUC	148.9	91.7	68.775	114.625	NO	YES	57.2
Praslin-Salazie-PUC	95.9	107.1	80.325	133.875	NO	NO	-11.2
Vallee-De-Mai-Shelter	166.8	106.8	80.1	133.5	NO	YES	60.0
Vallee-De-Mai-Viewing-Lodge	187.1	119	89.25	148.75	NO	YES	68.1

3. Daily Weather for June 2021 at the Seychelles International Airport

3.1 Daily rainfall, relative humidity, maximum, and minimum temperatures in June 2021

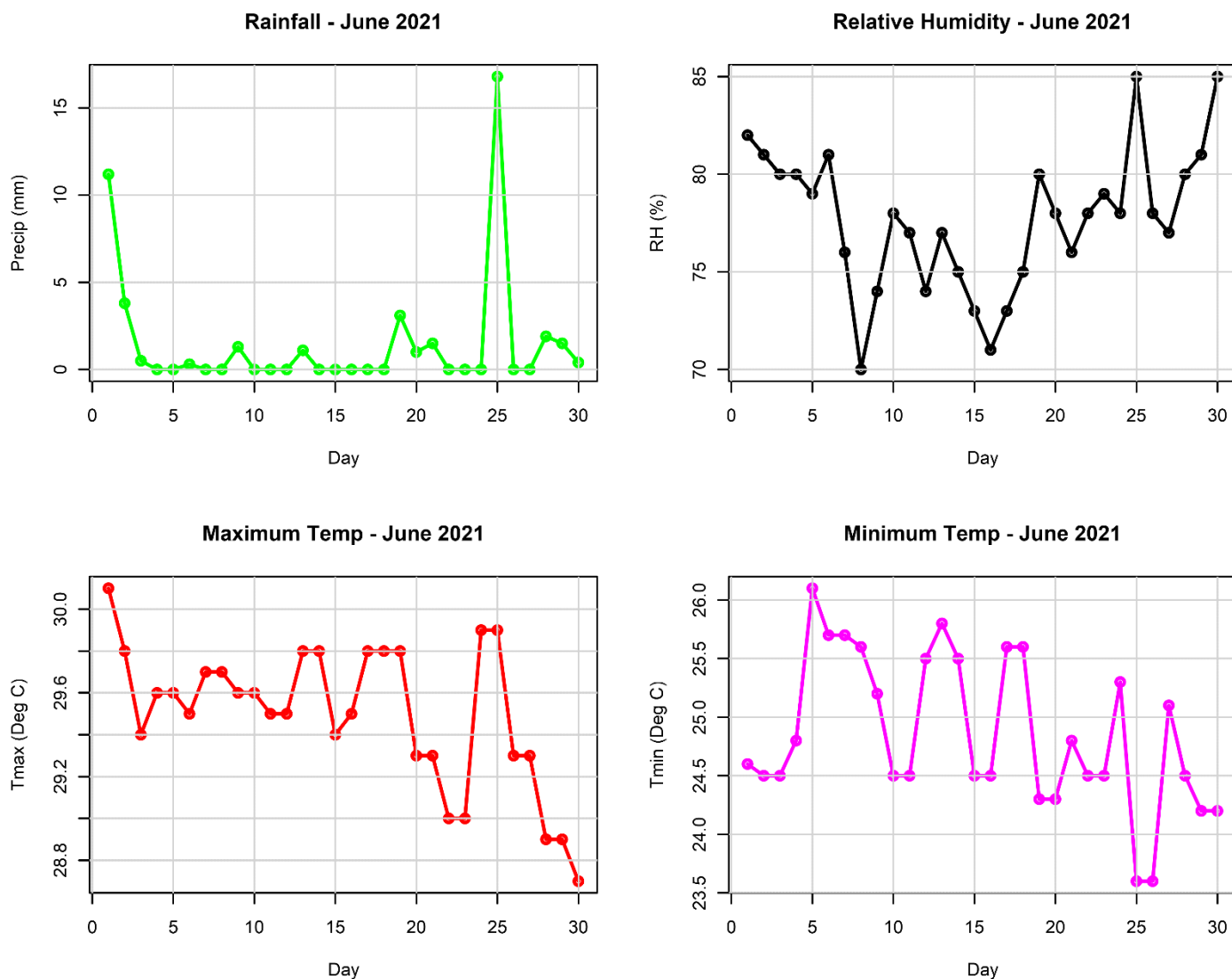


Figure 4: Daily rainfall, relative humidity, maximum and minimum temperatures in June 2021

The highest recorded daily rainfall in June at the Airport Station was 16.8 mm on the 25th, with 9 dry days during the month. The relative humidity remained high, above 70%, throughout the month. The daily maximum temperature generally remained above 28.0°C for the entire month, with the highest at 30.1°C reported on the 1st. The minimum temperature varied between 23°C to 26°C with the lowest of 23.6°C reported on 25th and 26th while the highest of 26.1°C reported on 5th.

3.2 Daily solar Radiation, Sunshine hours, Mean Sea Level Pressure, and Surface wind speeds in June 2021

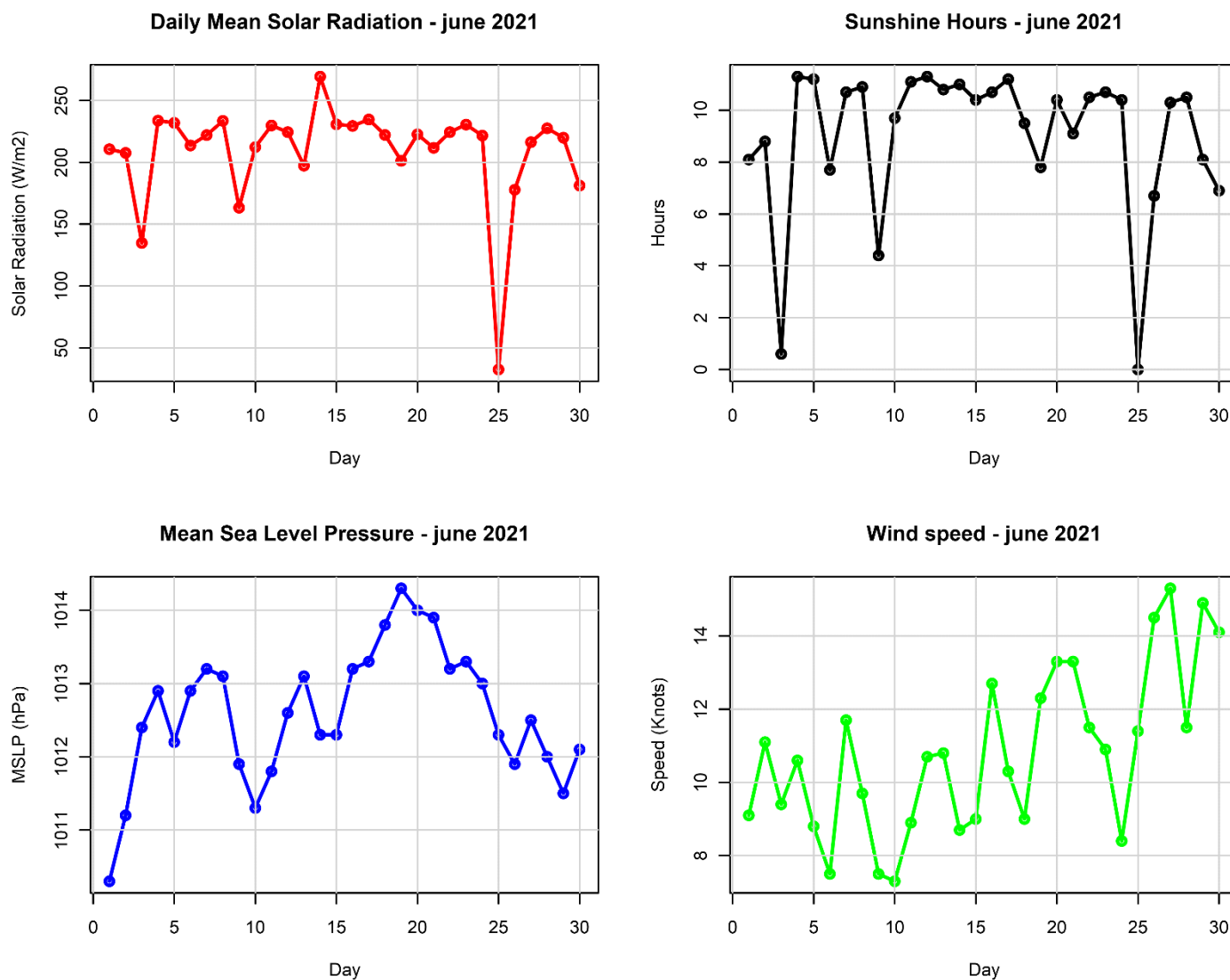


Figure 5: Daily solar Radiation, Sunshine hours, Mean Sea Level Pressure, and Surface wind speeds in June 2021

On average, the mean solar radiation during June remained mostly above 150 W/m2, and the diurnal variation closely matched the sunshine hours. A gradual increase in the wind speeds was reported with light to moderate wind strength ranging between 7-15 Knots. The mean sea level pressure showed a positive trend with a range of 1010.3-1014.3hPa (Figure 5).

4. Wind Patterns in June 2021

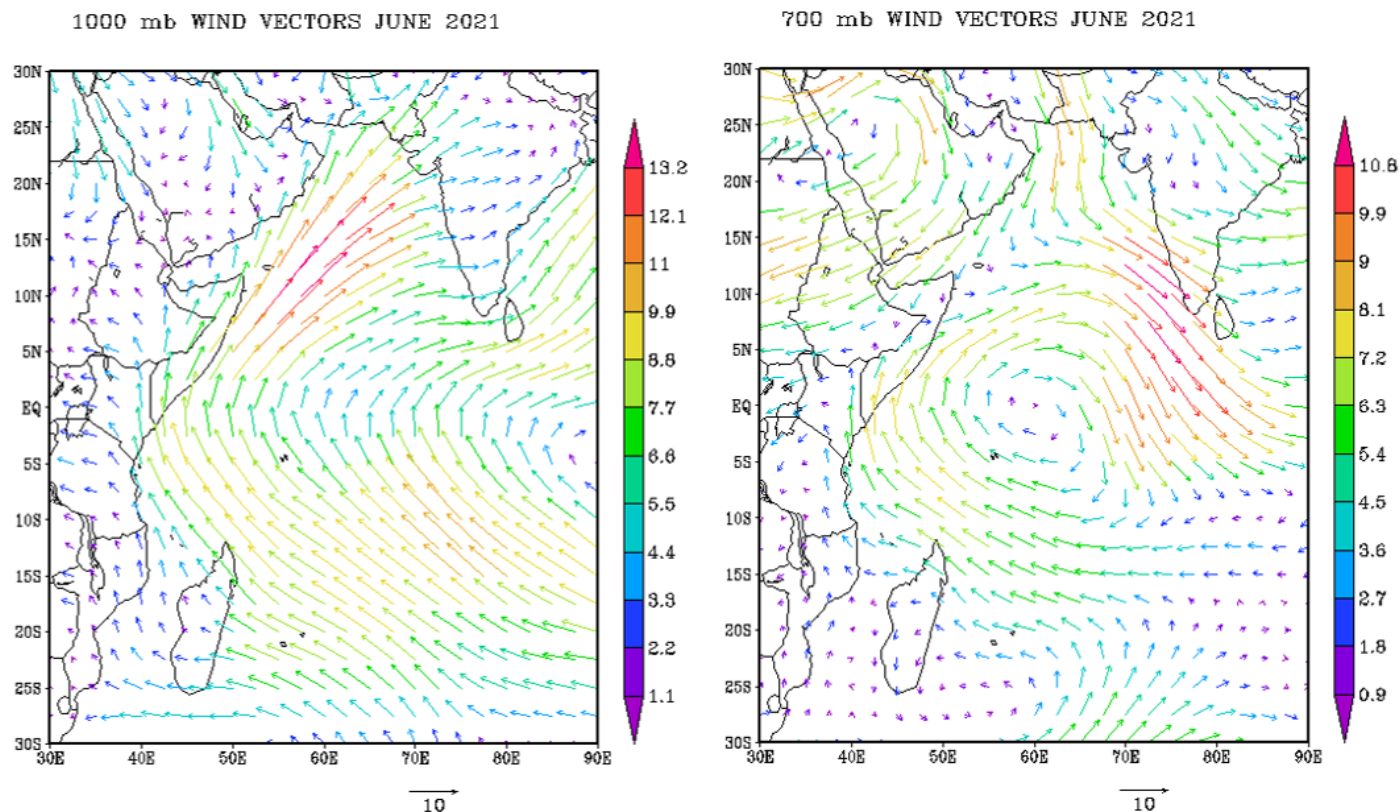


Figure 6: Surface wind flow (left) and wind flow at 700mb (right)

The analysis (Figure 6) indicates that at the surface, a trans-equatorial flow of moderate South-easterlies of 5-10m/s and a trough axis forming to slightly to the North. Strong convergence is present in the far northeast near the southern tip of the Asian continent. The pattern at the middle levels also indicated a cyclonic circulation spanning through 50°-70° longitude.