

July-August-September 2021
Seasonal Climate Outlook





SEYCHELLES METEOROLOGICAL AUTHORITY

July-August-September 2021 Seasonal Climate Outlook



Table of Contents

1. April-May-June 2021 Performance.....	1
2. May-June-July 2021 Performance.....	1
3. Oceanic Patterns 2021	2
4. July-August-September Rainfall Seasonal Forecast 2021	4



SEYCHELLES METEOROLOGICAL AUTHORITY

July-August-September 2021 Seasonal Climate Outlook



1. April-May-June 2021 Performance

Table 1 below shows that the rainfall recorded during the April-May-June (AMJ) season was entirely Above-Normal over all areas.

Table 1: April-May-June Rainfall Performance

	AMJ TOTAL	AMJ LONG TERM MEAN	BN	AN	BN?	AN?	ANOMALIES
Anse-Boileau	1151.7	326.7	245.0	408.4	NO	YES	825.0
Anse-Forbans	780.1	417.2	312.9	521.5	NO	YES	362.9
Anse-Royale-Police-Station	650.1	360.4	270.3	450.5	NO	YES	289.7
Anse-Royale-Waterwork-PUC	740.9	380.2	285.2	475.3	NO	YES	360.7
Belombre	1299.2	530.6	398.0	663.3	NO	YES	768.6
Cascade-Waterwork-PUC	1114.8	696.9	522.7	871.1	NO	YES	417.9
Fairview-La-Misere	1133.2	832.5	624.4	1040.6	NO	YES	300.7
Hermitage-Waterwork-PUC	1146	473.9	355.4	592.4	NO	YES	672.1
La-Gogue-Waterwork-PUC	988.8	289.3	217.0	361.6	NO	YES	699.5
Le-Niol-Waterwork-PUC	1382.4	628.0	471.0	785.0	NO	YES	754.4
Praslin-Airstrip	783.7	396.1	297.1	495.1	NO	YES	387.6
Quatre-Bornes-Police-Station	625	361.6	271.2	452.0	NO	YES	263.4
Rochon-Waterwork-PUC	1440.2	632.6	474.5	790.8	NO	YES	807.6
Seychelles-International-Airport	1023.9	540.0	405.0	675.0	NO	YES	483.9
Tea-Factory-Morne-Blanc	1247.8	632.5	474.4	790.6	NO	YES	615.3

2. May-June-July 2021 Performance

Table 2 below shows how the May-June-July season is performing so far, two months into the season. all stations considered for seasonal forecasting recorded below-Normal rainfall with some significant negative anomalies.

Table 2: May-June-July rainfall performance

	MAY TOTAL	JUN TOTAL	MAY + JUN TOTAL	MJJ LONG TERM MEAN	ANOMALIES
Anse-Boileau	517.8	140.4	658.2	686.3	-28.1
Anse-Forbans	366.9	45.1	412.0	757.1	-345.1
Anse-Royale-Police-Station	273.4	22.8	296.2	670.0	-373.8
Anse-Royale-Waterwork-PUC	289.2	45.5	334.7	690.4	-355.7
Belombre	351.9	115.5	467.4	822.1	-354.7
Cascade-Waterwork-PUC	321.3	82.2	403.5	890.2	-486.7
Fairview-La-Misere	340	92.8	432.8	838.1	-405.3
Hermitage-Waterwork-PUC	334.4	58.7	393.1	741.8	-348.7
La-Gogue-Waterwork-PUC	298.7	29.8	328.5	745.8	-417.3
Le-Niol-Waterwork-PUC	338.6	116.7	455.3	844.8	-389.5
Praslin-Airstrip	230.6	45.1	275.7	769.7	-494.0
Quatre-Bornes-Police-Station	297.6	73.0	370.6	598.8	-228.2
Rochon-Waterwork-PUC	383.8	87.3	471.1	815.8	-344.7
Seychelles-International-Airport	313.3	44.4	357.7	747.2	-389.5
Tea-Factory-Morne-Blanc	349.4	95.0	444.4	864.2	-419.8

3. Oceanic Patterns 2021

The El Niño–Southern Oscillation (ENSO) remains neutral, with most oceanic and atmospheric indicators within the neutral range. Most climate model outlooks indicate the central tropical Pacific Ocean is likely to cool over the coming months. Some models showing this cooling will be enough to reach the La Niña thresholds by late September, and other models staying neutral. This forecast cooling may also be contributing to the outlook for Normal to below-median rainfall for Seychelles in the coming months. Both weekly and monthly sea surface temperature anomalies (Figure 1) indicate a reduction in the warming along the eastern coast of Madagascar and extending to the east African coast. However, some cooler than average water near the Seychelles is also apparent.

The seasonal sea surface temperature anomalies indicate some warming to the eastern side of Madagascar. However, some cooling is seen within the channel area and extending to the South. According to most surveyed climate models, a negative Indian Ocean Dipole (IOD) is underway and may persist until at least October (Figure 2).

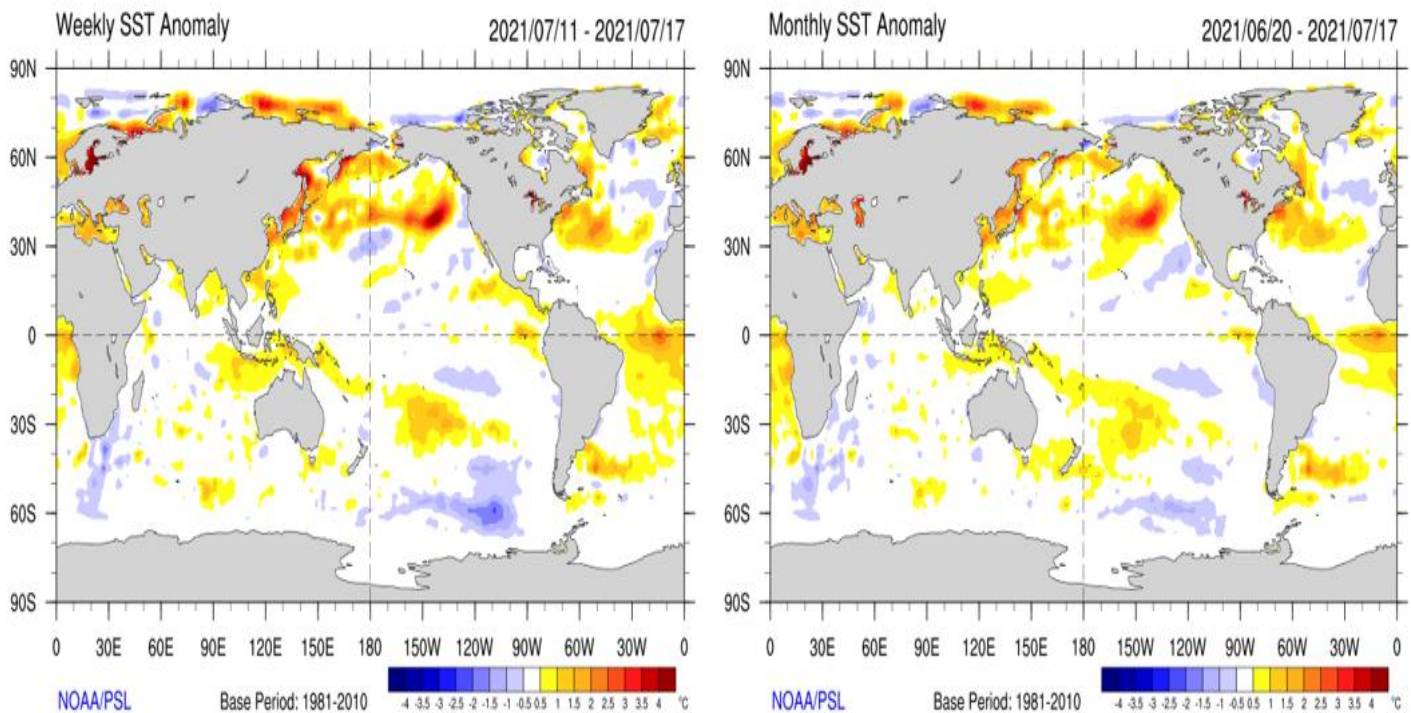


Figure 1: Current weekly SST Anomalies (Left) and Current monthly SST Anomalies (Right)

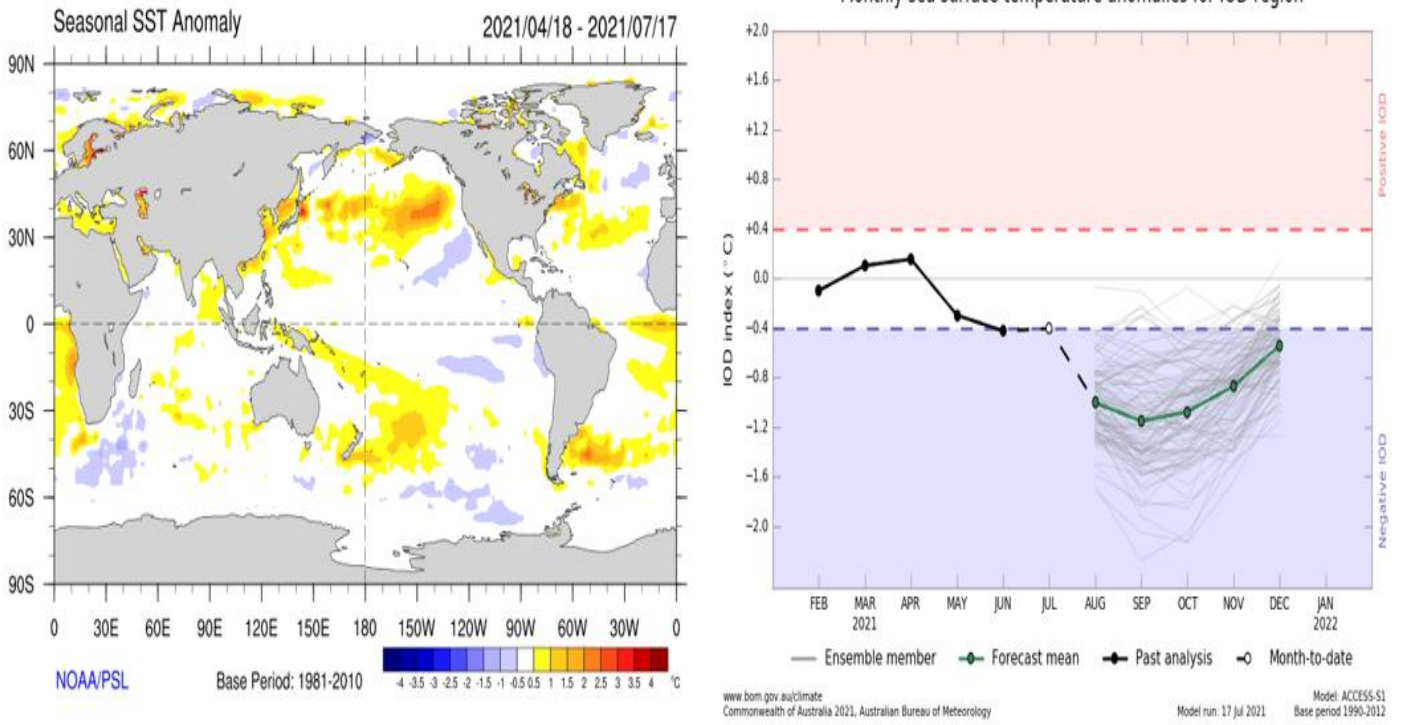


Figure 2: Current Seasonal SST Anomalies (Left) and The Indian Ocean Dipole index (Right)

4. July-August-September Rainfall Seasonal Forecast 2021

Rainfall Seasonal forecast - JAS 2021

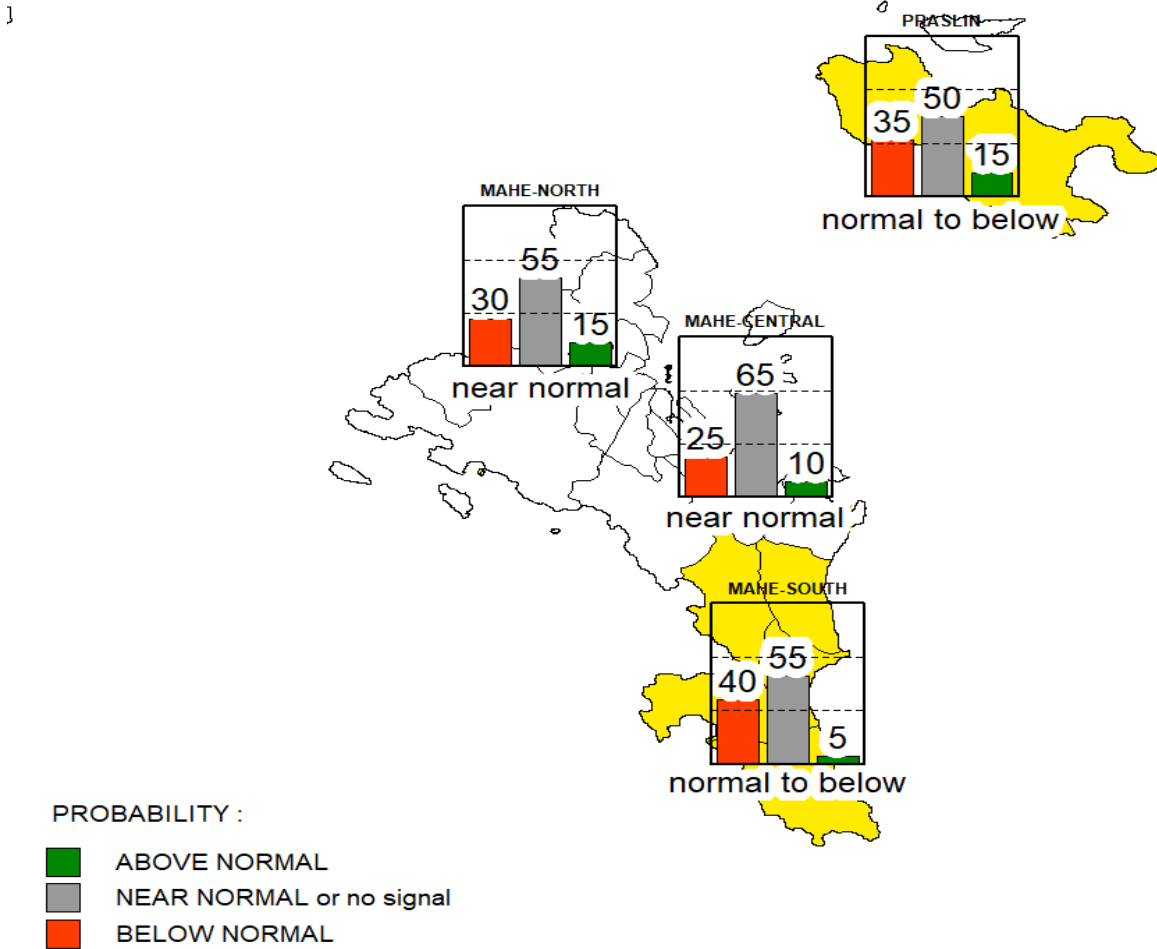


Figure 3: June-July-August Rainfall Seasonal Forecast 2021

Based on the prevailing conditions over the South-west Indian Ocean, the probability-based rainfall outlook for July-August-September indicates an enhanced likelihood for Near-Normal Rainfall with a strong bias towards Below-Normal over Mahe and Inner Islands.