

February 2021 Weather Review





SEYCHELLES METEOROLOGICAL AUTHORITY

March 2021 Climate and Weather Bulletin



Table of Contents

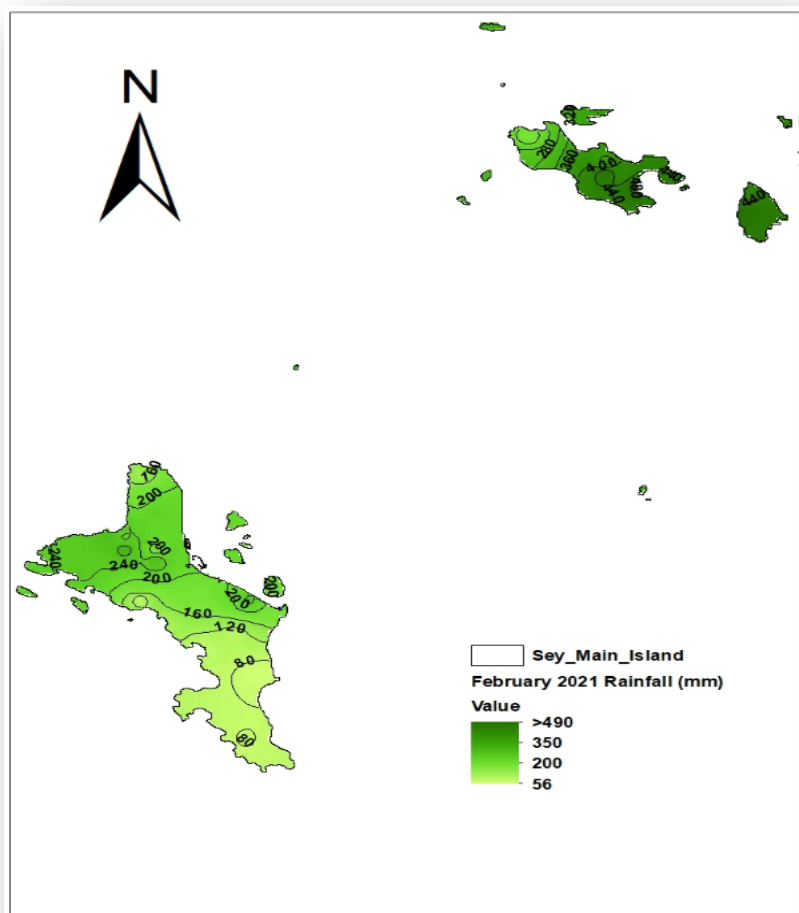
1.0 Introduction.....	1
2.0 Rainfall Performance in February 2021.....	1
2.1 Spatial Rainfall Distribution for February 2021	1
2.2 february rainfall totals compared to long-term mean.....	2
2.3 Percentage of mean Rainfall for February 2021	3
3.0 Daily Weather for February 2021 at the Seychelles International Airport	5
3.1 Daily rainfall, relative humidity, maximum and minimum temperatures in February 2021	5
3.2 Daily solar Radiation, Sunshine hours, Mean Sea Level Pressure, and Surface wind speeds in February 2021	6
4.0 Wind patterns in February 2021	7

1.0 INTRODUCTION

This bulletin reviews climate conditions over *Mahe, Praslin, and La Digue* and highlights the status of the climate systems during the month of February 2021. The month saw a gradual shift of weather activities south of the main island Mahe, affecting the islands to the south as the Inter Tropical Convergence Zone (ITCZ) remained around that area. However, the proximity of the ITCZ meant that frequent down pours were still experienced. Further to the south, the tropical cyclone season remained active with two cyclones developing within the basin. Tropical cyclone Faraji (4th February) eventually developed to become the first intense tropical cyclone of the season and Tropical cyclone Guambe (17th February) formed within the Mozambique Channel.

2.0 RAINFALL PERFORMANCE IN FEBRUARY 2021

2.1 Spatial Rainfall Distribution



A slight reduction in rainfall was recorded in the month of February 2021 compared to January. The spatial map (Figure 1) shows an uneven distribution with most of the rainfall concentrating towards Mahe North, Praslin and La Digue, whereby a maximum of 557.7 mm was recorded at Vallee de mai viewing lodge. Meanwhile Mahe south recorded the lowest amount with a minimum of 56.3 mm recorded at Pointe au sel.

Figure 1: February 2021 Spatial Rainfall Distribution

2.2 February rainfall totals compared to the long-term mean

The disparity in rainfall distribution across the 37 stations can be seen in figure 2 below. The stations on Praslin and La Digue except for Mont Plaisir (Praslin), received more rainfall than the stations on Mahe. However, altogether 16 stations managed to exceed their respective long term mean for February, the majority of which were on Praslin and La Digue (11).

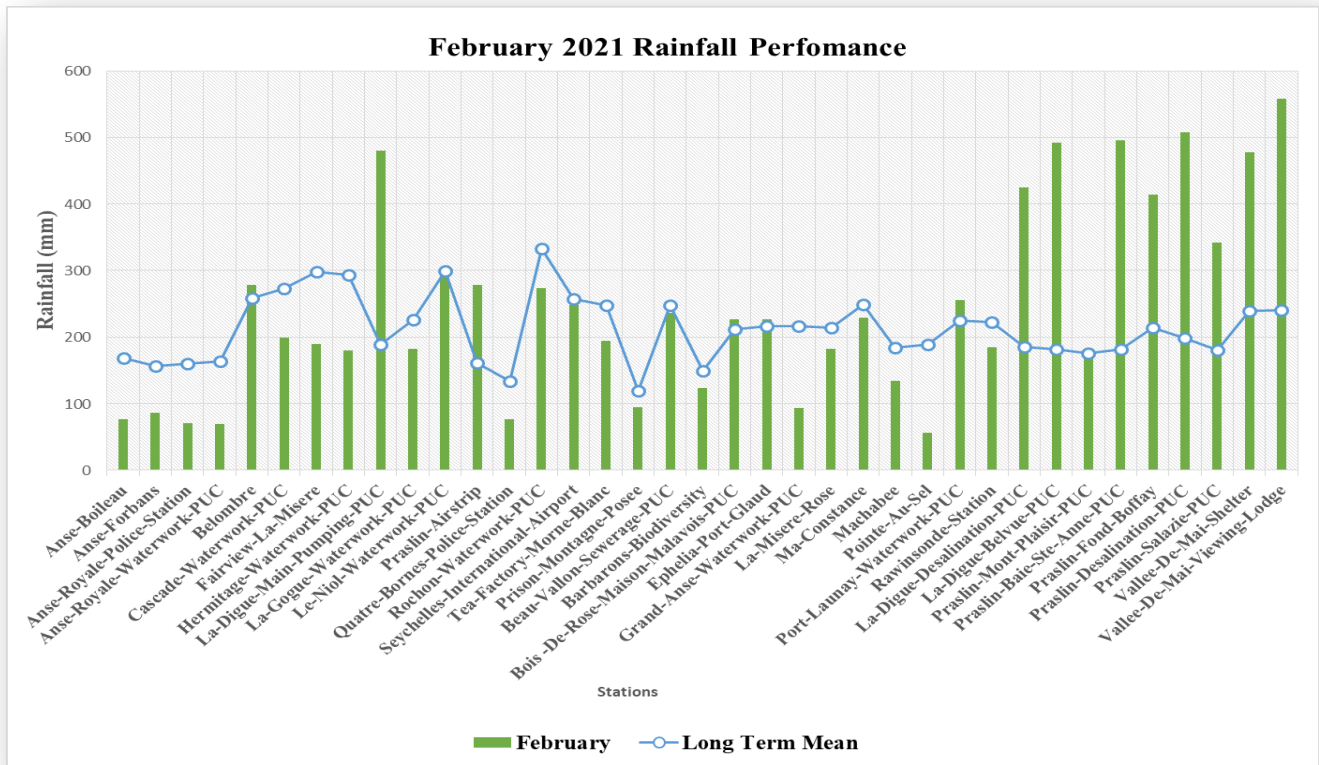
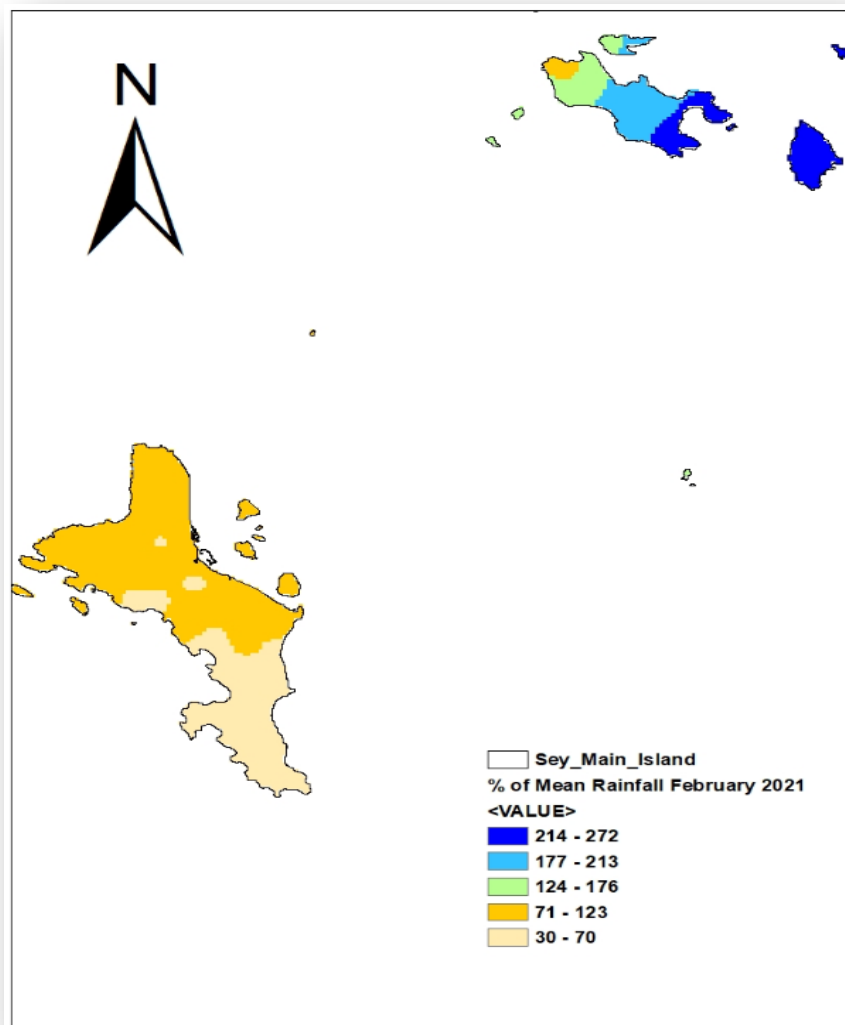


Figure 2: February 2021 rainfall totals compared to long-term mean

2.3 Percentage of mean Rainfall for February 2021



In terms of percentage of the long term mean (average rainfall), again the stations in Mahe North, Praslin and La Digue performed better. All the stations on Praslin and La Digue received more than their February average (>100%), with Belvue on La Digue recording a maximum of 271% of its average for February. On Mahe, only 5 stations received more than 100%, all of which were in the North. Meanwhile the minimum was recorded in the south, at Pointe au sel with only 30%.

Figure 3: Percentage of mean Rainfall for February 2021



SEYCHELLES METEOROLOGICAL AUTHORITY

March 2021 Climate and Weather Bulletin



STATONS	FEBRUARY	LTM	BN	AN	BN?	AN?	ANOMALIES
Anse-Boileau	76.9	168.4	126.3	210.5	YES	NO	-91.5
Anse-Forbans	86.1	157	117.8	196.3	YES	NO	-70.9
Anse-Royale-Police-Station	71.3	159.6	119.7	199.5	YES	NO	-88.3
Anse-Royale-Waterwork-PUC	69.6	163.5	122.6	204.4	YES	NO	-93.9
Belombre	278.1	258.5	193.9	323.1	NO	NO	19.6
Cascade-Waterwork-PUC	199	272.8	204.6	341.0	YES	NO	-73.8
Fairview-La-Misere	189.2	297.9	223.4	372.4	YES	NO	-108.7
Hermitage-Waterwork-PUC	179.6	293.7	220.3	367.1	YES	NO	-114.1
La-Digue-Main-Pumping-PUC	479.4	188.8	141.6	236.0	NO	YES	290.6
La-Gogue-Waterwork-PUC	182	226.5	169.9	283.1	NO	NO	-44.5
Le-Niol-Waterwork-PUC	300	299.4	224.6	374.3	NO	NO	0.6
Praslin-Airstrip	278.3	161.2	120.9	201.5	NO	YES	117.1
Quatre-Bornes-Police-Station	76.9	133.8	100.4	167.3	YES	NO	-56.9
Rochon-Waterwork-PUC	274.1	333.1	249.8	416.4	NO	NO	-59.0
Seychelles-International-Airport	248.9	257	192.8	321.3	NO	NO	-8.1
Tea-Factory-Morne-Blanc	194.1	248.3	186.2	310.4	NO	NO	-54.2
Prison-Montagne-Posee	94.8	118.9	89.2	148.6	NO	NO	-24.1
Beau-Vallon-Sewerage-PUC	236	247.2	185.4	309.0	NO	NO	-11.2
Barbarons-Biodiversity	123.6	149	111.8	186.3	NO	NO	-25.4
Bois -De-Rose-Maison-Malavois-F	227.2	211.4	158.6	264.3	NO	NO	15.8
Ephelia-Port-Glaud	226.8	216	162.0	270.0	NO	NO	10.8
Grand-Anse-Waterwork-PUC	93	217.1	162.8	271.4	YES	NO	-124.1
La-Misere-Rose	182.4	214.7	161.0	268.4	NO	NO	-32.3
Ma-Constance	229	248.7	186.5	310.9	NO	NO	-19.7
Machabee	134	184.1	138.1	230.1	YES	NO	-50.1
Pointe-Au-Sel	56.3	189.1	141.8	236.4	YES	NO	-132.8
Port-Launay-Waterwork-PUC	255.9	224.5	168.4	280.6	NO	NO	31.4
Rawinsonde-Station	185.2	222	166.5	277.5	NO	NO	-36.8
La-Digue-Desalination-PUC	424.9	185	138.8	231.3	NO	YES	239.9
La-Digue-Belvue-PUC	491.7	181.4	136.1	226.8	NO	YES	310.3
Praslin-Mont-Plaisir-PUC	178.1	176	132.0	220.0	NO	NO	2.1
Praslin-Baie-Ste-Anne-PUC	495.6	182	136.5	227.5	NO	YES	313.6
Praslin-Fond-Boffay	414.3	214.7	161.0	268.4	NO	YES	199.6
Praslin-Desalination-PUC	507.3	198.4	148.8	248.0	NO	YES	308.9
Praslin-Salazie-PUC	342.2	181.1	135.8	226.4	NO	YES	161.1
Vallee-De-Mai-Shelter	478.1	239.1	179.3	298.9	NO	YES	239.0
Vallee-De-Mai-Viewing-Lodge	557.7	240.4	180.3	300.5	NO	YES	317.3

Table 1: Observed rainfall for February

The observed rainfall (Table 1) indicates that 11 stations reported Below Normal rainfall, representing 30% of all the stations. 10 reported Above Normal rainfall, representing 27% of the stations and 16 reported Normal rainfall, representing 43% of all the stations. All the stations which recorded Above Normal rainfall were on Praslin and La Digue, while all those that recorded Below Normal were on Mahe, particularly in the south.

3.0 DAILY WEATHER FOR FEBRUARY 2021 AT THE SEYCHELLES INTERNATIONAL AIRPORT

3.1 Daily rainfall, relative humidity, maximum and minimum temperatures in February 2021

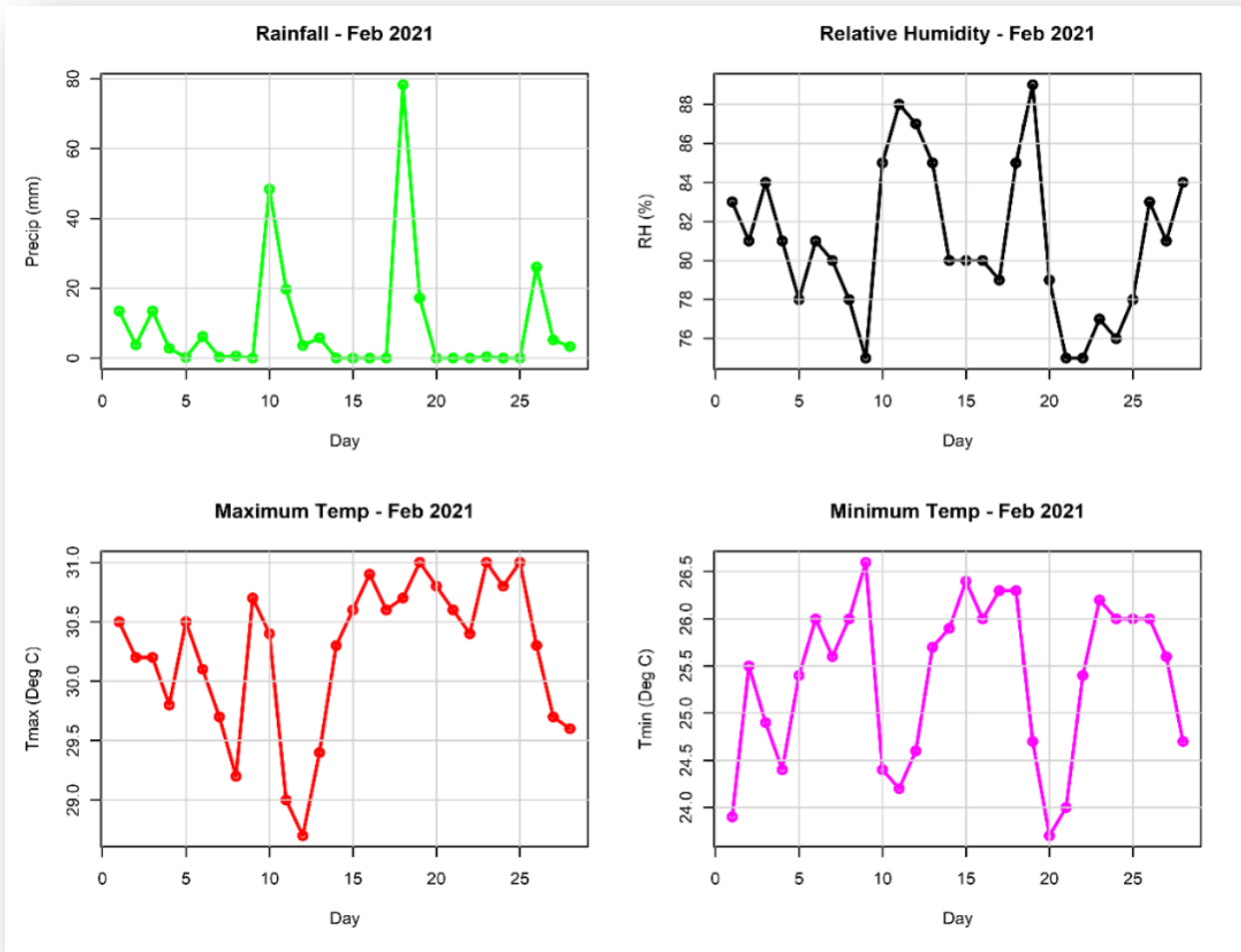


Figure 4: Daily rainfall, relative humidity, maximum and minimum temperatures in February 2021

Maximum rainfall recorded at the Airport Station was 78.3 mm recorded on the 18th of February. The Monthly mean relative humidity for the month was 81%, with a maximum of 89% recorded on the 19th. The highest maximum daily temperature was 31.0 °C recorded on the 19th and 23rd, while the lowest minimum temperature was recorded on the 1st with a value of 23.9 °C.

3.2 Daily solar Radiation, Sunshine hours, Mean Sea Level Pressure, and Surface wind speeds in February 2021

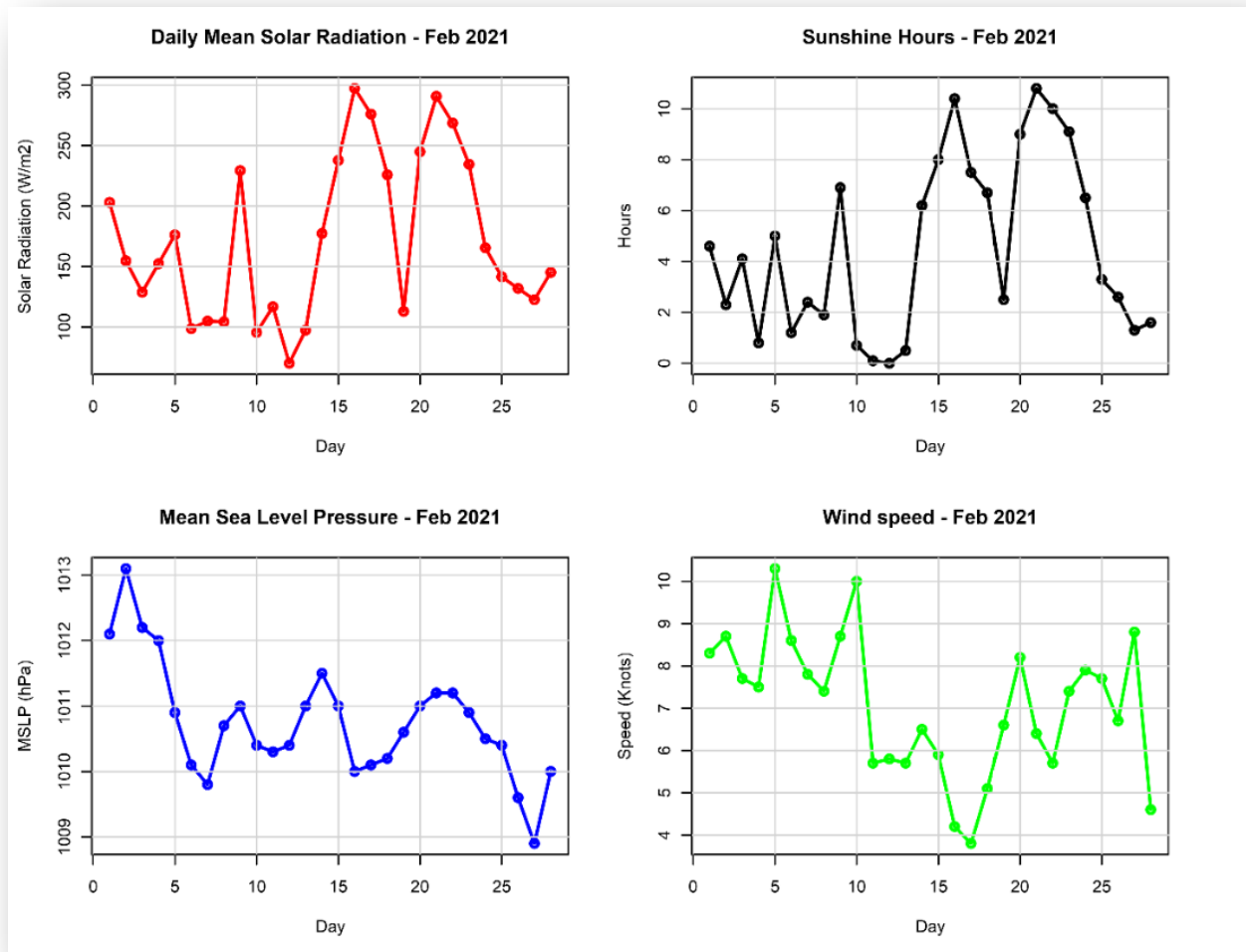


Figure 5: Daily solar Radiation, Sunshine hours, Mean Sea Level Pressure, and Surface wind speeds in February 2021

The average solar radiation during the month of February was 172 W/m², a decrease of 10 W/m² from the previous month, while the average sunshine hours stood at 4.5 hrs (Figure 5), a decrease of 1.1 hrs. The average monthly wind speed remained at 7.0 Knots (~12.9 km/hr) and the average mean sea level pressure was 1010.8Hpa with the lowest being 1008.9Hpa recorded on the 27th.

4.0 WIND PATTERNS IN FEBRUARY 2021

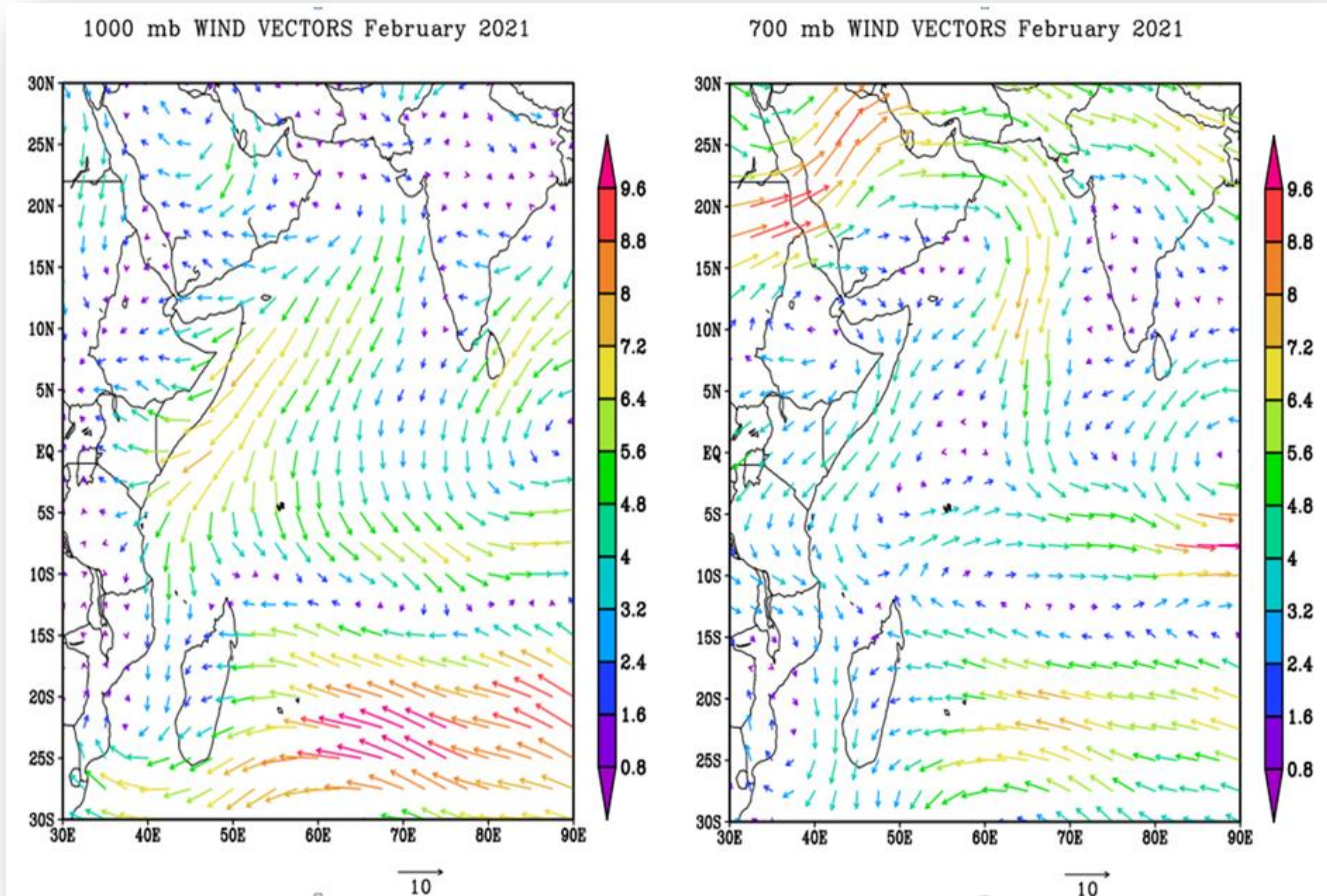


Figure 6: Surface wind flow (left) and wind flow at 700mb (right)

The mean position of the Inter Tropical Convergence Zone (ITCZ) for the month of February was found to be between latitudes 10°S and 15°S and the general Northwesterly flow at the surface as well as at 700 mb prevailed throughout the entire month. At 700 mb a High pressure circulation can also be seen over the Arabian Peninsula (Arabian High). The extension of the ridge emanating from the Arabian High assisted in maintaining the ITCZ to the south of the main island Mahe. Over all the wind for the month of February remained fairly light.